



Homogeneous Vinyl

**sphera<sup>®</sup>** energetic



27 x 2 m

creating better environments



FLOORING SYSTEMS



# sphera<sup>®</sup> energetic

**THE MOST DYNAMIC AND ENERGIZING OFFER IN HOMOGENEOUS VINYL**

## *Fit for purpose*

This exciting range brings new dynamics to homogeneous vinyl flooring. With its vibrant visuals it answers the diverse needs found in modern spaces. This second generation of Sphera Energetic is based on the latest requirements in building design, effective learning and user productivity. Sphera Energetic offers a playful combination of a coordinated colour palette and designs with different intensity and scale, making it fit for purpose for any function or intensity of use.

## *Innovative, premium homogeneous vinyl*

Sphera, Forbo's premium, homogeneous vinyl collection, has a diverse offer of designs to ensure that Sphera can add style to every project. All Sphera collections are carefully selected with different application areas in mind, developed by our European design team and using the latest production technology.

## *Creating better environments*

Sphera is developed, from the start, to avoid any unnecessary waste and minimize energy and raw material use. Sphera is a premium quality homogeneous vinyl throughout the product. All waste is reused in other premium products from Forbo Flooring Systems without impacting the quality of these products. It is produced with 100% green energy with minimal impact on the environment.



Learning is part of life for everyone. This collection taught us how to be strong and playful, bold and smart, innovative and focused.

The result is an intriguing mix of colours and designs. Ranging from subtle to powerful and expressive, to be used together or on their own. Energetic is designed as the answer to the different dynamics of a building in a dynamic and energizing manner.

## DESIGN COLOUR

- 2 designs with excellent dirt hiding and scratch resistant properties.
- Unique possibilities to play with proportions and colour combinations.
- High LRV's and low gloss enhance the user experience.
- Colour coordinated with other Forbo ranges.

## TECHNOLOGY SUSTAINABILITY

- Low emissions & phthalate free manufacturing contribute to a healthy indoor environment.
- Low energy and water use thanks to the efficient state-of-art production process.
- Carefully selected raw materials to offer possibilities for re-use after end of life.
- Sphera is GreenTag GreenRate Level A certified.

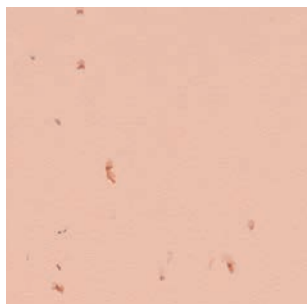
## PERFORMANCE DURABILITY

- SMART-top finish specifically designed for easy cleaning.
- Excellent stain resistant surface treatment.
- High quality scratch resistance with SMART-top finish.





50201 | yellow - 50239 | ice - 50241 | madder red - 53200 | confetti snow



50231 | rosebud

LRV 61%



50241 | madder red

LRV 16%



53200 | confetti snow

LRV 65%



51231 | vivid rosebud

LRV 61%



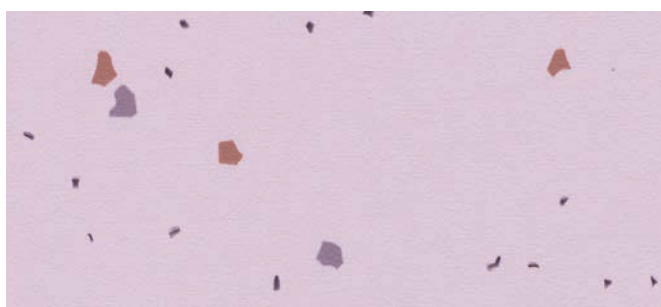
50201 | yellow

LRV 64%



50214 | lime

LRV 55%



51234 | vivid lilac

LRV 56%



51239 | vivid ice

LRV 58%



50234 | lilac

LRV 56%



50219 | dolphin

LRV 24%



50217 | mystic blue

LRV 35%



50239 | ice

LRV 58%



**50236** | thyme - **53202** | confetti concrete - **50209** | nutmeg - **5754** | coral straw brown



**50236** | thyme

LRV 30%



**50233** | Swedish grey

LRV 55%



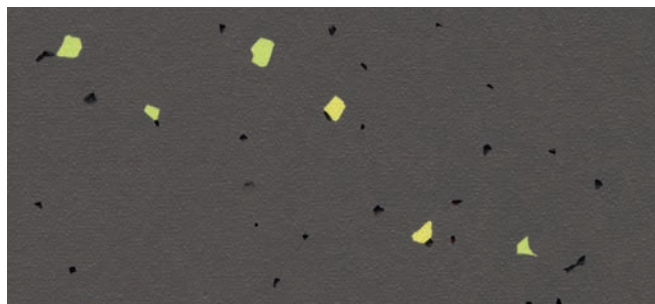
**51243** | vivid snow

LRV 79%



**51245** | vivid thyme

LRV 30%



**51244** | vivid ebony

LRV 14%



**51242** | vivid malachite

LRV 14%



**51207** | vivid denim

LRV 11%

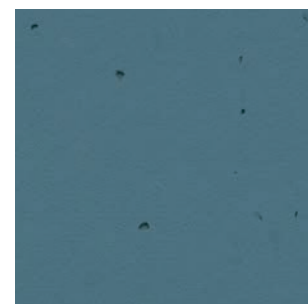


**50242** | malachite

LRV 14%



**51242** | vivid malachite - **51207** | vivid denim



**50204** | deep sea

LRV 17%





**53202** | confetti concrete

LRV 33%



**53215** | confetti ebony

LRV 26%



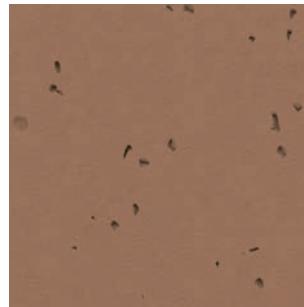
**50209** | nutmeg

LRV 31%



**50221** | linen

LRV 56%



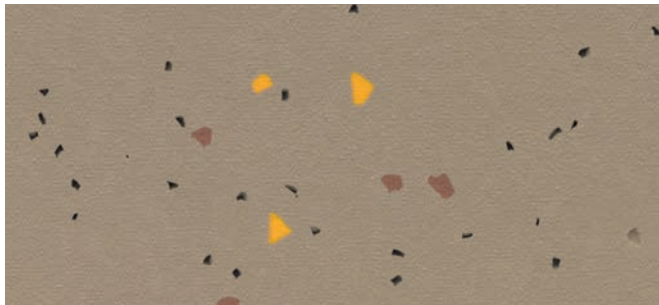
**50225** | masala

LRV 21%



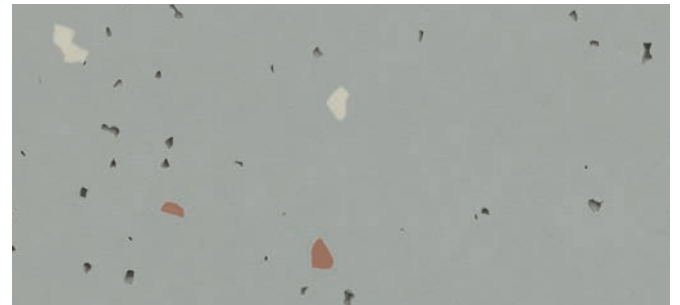
**50202** | concrete

LRV 38%



**51209** | vivid nutmeg

LRV 31%



**51202** | vivid concrete

LRV 38%



**51210** | vivid mandarin

LRV 40%



**51212** | vivid elephant

LRV 29%



**50210** | mandarin

LRV 40%



**50211** | stone

LRV 49%



**50215** | ebony

LRV 14%



**50216** | pigeon

LRV 26%



**52202** | shimmer concrete - **50225** | masala - **50231** | rosebud - **52216** | shimmer pigeon



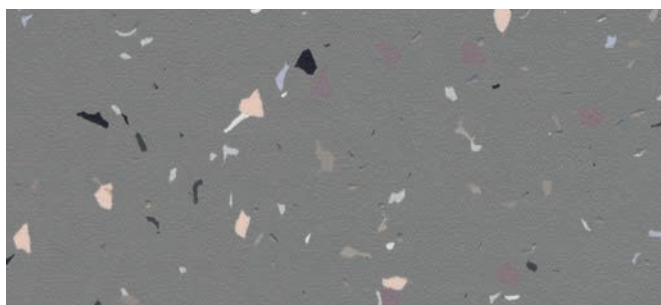
**52202** | shimmer concrete

LRV 38%



**52222** | shimmer lace

LRV 76%



**52216** | shimmer pigeon

LRV 26%



**52225** | shimmer masala

LRV 21%



**52215** | shimmer ebony

LRV 14%



**52217** | shimmer mystic blue - **50201** | yellow



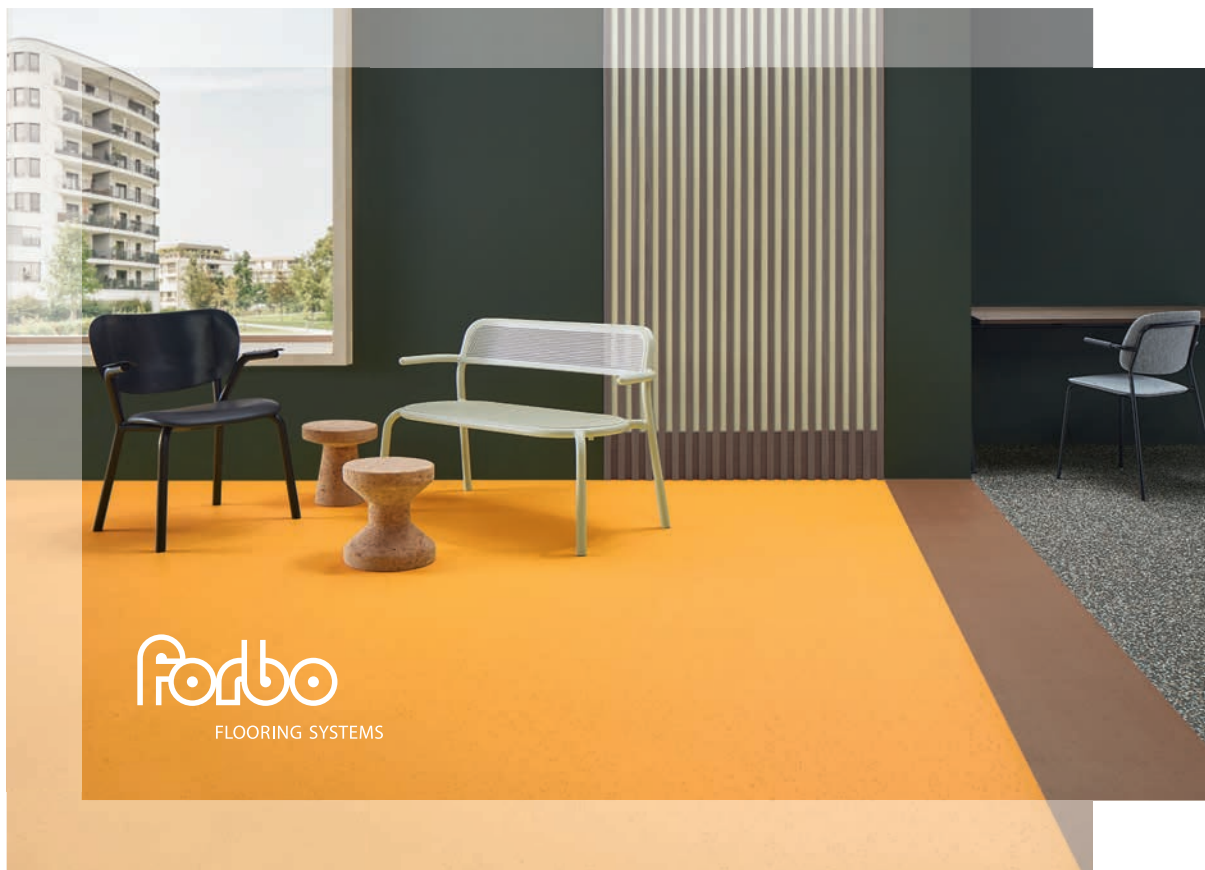
**52236** | shimmer thyme

LRV 30%



**52217** | shimmer mystic blue

LRV 35%



## Forbo's homogeneous flooring **technology**



Uniquely  
embossed  
surface for  
optimal  
performance



Low emitting and  
100% phthalate free



### **SMART top**

Resists stains  
and scratches



High LRV's  
and bright,  
saturated hues



Produced in a zero waste environment











# Technical specifications

Sphera Energetic meets the requirements of EN ISO 10581



	Total thickness	EN ISO 24346	2.0 mm
	Surface finish		SMART top
	Binder content	EN ISO 10581	Type 1
	Collection size		42
	Domestic use	EN ISO 10874	Class 23
	Commercial use	EN ISO 10874	Class 34
	Light industrial use	EN ISO 10874	Class 43
	Roll width	EN ISO 24341	2.0 m
	Roll length	EN ISO 24341	≤ 27 m
	Total weight	EN ISO 23997	2850 g/m <sup>2</sup>
	Dimensional stability <i>Typical value</i>	EN ISO 23999	≤ 0.4 % ~ 0.2 %
	Slip resistance	AS 4586	P3*
	Castor chair continuous use	ISO 4918	Pass
	Residual indentation <i>Typical value</i>	EN ISO 24343-1	≤ 0.10 mm ~ 0.03 mm
	Colour fastness to light	EN ISO 105-B02 method 3	≥ 7
	Indoor air emissions : TVOC after 28 day	EN 16516	≤ 0.01 mg/m <sup>3</sup>
	Resistance to chemicals	EN ISO 26987	Very good
	Flexibility	EN ISO 24344	Ø 10 mm
	Use in wet areas	EN 13553	Yes
	Bacteria resistance	EN 846	Does not support growth
	LCA Life Cycle Assessment	LCA is the foundation for securing the lowest environmental impact	
	Renewable electricity	Sphera Energetic is manufactured using 100% electricity from renewable sources	

Sphera Energetic meets the requirements of EN 14041:2004



	Reaction to fire	ISO 9239-1	CRF: 9.2 kW/m <sup>2</sup> / Smoke: 136% min
	Reaction to fire walls	AS 5637.1	Group 3
	Thermal conductivity	EN 12524	0.25 W/mK
	Body voltage	EN 1815	≤ 2.0 kV

\*Slip test result achieved in an independent laboratory. On-site testing may include many variables and this can affect results. Follow cleaning and maintenance instructions.

All Forbo Flooring Systems' sales organisations worldwide have a certified Quality Management System in accordance with ISO 9001. All Forbo Flooring Systems' manufacturing operations have a certified Environmental Management System in accordance with ISO 14001. The Life Cycle Assessment (LCA) of Forbo Flooring Systems' products is documented in individual Environmental Product Declarations (EPD's) which can be found on all of our websites.



## Australia

Forbo Flooring Systems Pty Ltd  
23 Ormsby Place,  
Wetherill Park NSW 2164  
Tel: 1800 224 471  
Fax: 1800 662 566  
info.au@forbo.com  
www.forbo-flooring.com.au

## New Zealand

Inzide Commercial Ltd  
Level 2, 34 Barrys Point Rd  
Takapuna Auckland, 0622  
Tel : +64 9 441 9850  
Free call: 0800 800 656  
Fax: +64 9 441 9851  
www.inzide.co.nz  
sales@inzide.co.nz

For more information:

✉ [info.au@forbo.com](mailto:info.au@forbo.com)

☎ 1800 224 471

🌐 [forbo-flooring.com.au/sphera](http://forbo-flooring.com.au/sphera)

📄 [forbo-flooring.com.au/downloads](http://forbo-flooring.com.au/downloads)

Find us on



creating better environments

FLOORING SYSTEMS