



Human Nature[™] Collection

Interface[®]

Human Nature™ Collection

It's human nature to be creative. As designers we know that when we follow nature's example, designing spaces that ignite our senses through light, colour, texture and detail, we also spark the creative spirit in each of us.

Human Nature Collection was designed as a beautiful foundation for those spaces, made up of five different textures in 25cm x 1m skinny planks. Borrowing from natural elements, HN810™, HN850™ and HN840™ placed in sequence blend seamlessly in an organic movement that shows no hint of the corners or edges of the tile. HN820™ and HN830™ extend the range from very low profile to wildly-full and neutral to colourful.

Like everything in the natural world, transitions are varied. The skinny plank format lends itself to fluid transitions with its graceful, elongated dimensions. More dynamic connections are made when mixing hues and textures with the bold geometry of the tile.

Of course, Human Nature Collection is made of up to 81% total recycled content, including 100% recycled nylon made in part from reclaimed fishing nets. And when its useful life is through, it can be recycled through Interface's ReEntry® Program.

Your turn. Be creative – it's in your nature.





PRODUCT HN840 COLOUR NICKEL - INSTALLED ASHLAR

HN840™ Colourline



7619-001-000 Flint



7619-002-000 Nickel



7619-003-000 Slate



7619-004-000 Limestone



7619-005-000 Pumice



7619-006-000 Shale



7619-007-000 Earth



7619-008-000 Travertine



PRODUCT HN850 COLOUR SLATE INSTALLED ASHLAR

HN850™ Colourline



7615-001-000 Flint



7615-002-000 Nickel



7615-003-000 Slate



7615-004-000 Limestone



7615-005-000 Pumice



7615-006-000 Shale



7615-007-000 Earth



7615-008-000 Travertine



PRODUCT HN810 COLOUR LIVESTONE INSTALLED HERRINGBONE

HN810™ Colourline



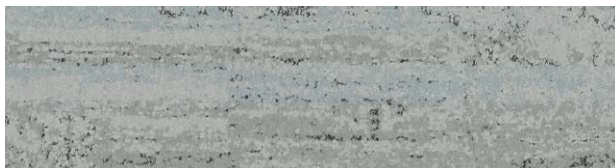
7617-001-000 Flint



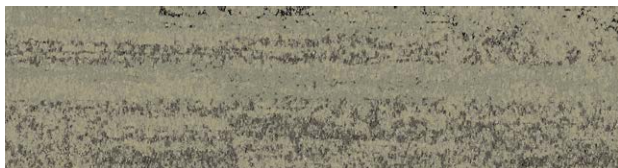
7617-002-000 Nickel



7617-003-000 Slate



7617-004-000 Limestone



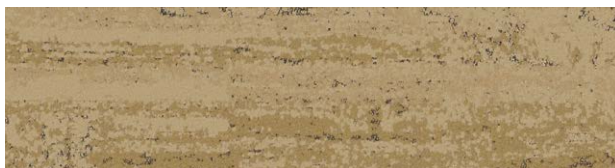
7617-005-000 Pumice



7617-006-000 Shale



7617-007-000 Earth



7617-008-000 Travertine



HN820™ Colourline



7627-001-000 Flint



7627-002-000 Nickel



7627-003-000 Slate



7627-004-000 Limestone



7627-005-000 Pumice



7627-006-000 Shale



7627-007-000 Earth



7627-008-000 Travertine



PRODUCT HN830 COLOURS MAIZE, COBALT, CLEMENTINE INSTALLED ASHLAR

HN830™ Colourline



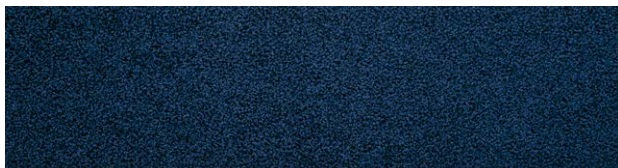
7621-001-000 Persimmon



7621-002-000 Maize



7621-003-000 Black



7621-004-000 Cobalt



7621-005-000 Clementine



7621-006-000 Kiwi



7621-007-000 Pistachio



7621-008-000 Bone

HN830 has been specifically designed to be used in small areas as borders, accents or insets.
We do not recommend its use in large areas.

Specifications

HN810™



Style Code	7617 Pattern 000
Product Definition	Tufted Textured Tip Sheared Loop
Yarn/Fibre	100% Non-virgin Type 6 Nylon
Colour System	100% Solution Dyed
Machine Gauge	1/10
Pile Thickness	5.0mm +/- 0.5mm
Total Thickness	9.0mm +/- 0.5mm
Tile Size	25cm x 100cm
Area of Use	Commercial – Heavy Duty
Lifetime Antimicrobial	Intersept®
Soil/Stain Protection	Protekt ² ®
Total Recycled Content	GlasBac® 65% to 70% recycled content GlasBac®RE 80% to 85% recycled content
Installation Methods	Ashlar, Herringbone



Ashlar



Herringbone

HN820™



Style Code	7627 Pattern 000
Product Definition	Tufted Cut and Loop
Yarn/Fibre	100% Non-virgin Type 6 Nylon
Colour System	100% Solution Dyed
Machine Gauge	5/64
Pile Thickness	3.0mm +/- 0.5mm
Total Thickness	6.5mm +/- 0.5mm
Tile Size	25cm x 100cm
Area of Use	Commercial – Heavy Duty
Lifetime Antimicrobial	Intersept®
Soil/Stain Protection	Protekt ² ®
Total Recycled Content	GlasBac® 65% to 70% recycled content GlasBac®RE 80% to 85% recycled content
Installation Methods	Ashlar, Herringbone



Ashlar



Herringbone

HN830™



Style Code	7621 Pattern 000
Product Definition	Tufted Cut Pile
Yarn/Fibre	100% Non-virgin Type 6 Nylon
Colour System	100% Solution Dyed
Machine Gauge	5/32
Pile Thickness	7.5mm +/- 0.5mm
Total Thickness	11.5mm +/- 0.5mm
Tile Size	25cm x 100cm
Area of Use	Commercial – General Duty
Lifetime Antimicrobial	Intersept®
Soil/Stain Protection	Protekt ² ®
Total Recycled Content	GlasBac® 65% to 70% recycled content GlasBac®RE 80% to 85% recycled content
Installation Methods	Ashlar, Herringbone



Ashlar



Herringbone

HN830 has been specifically designed to be used in small areas as borders, accents or insets. We do not recommend its use in large areas.

Specifications

HN840™

Style Code	7619 Pattern 000
Product Definition	Tufted Textured Loop
Yarn/Fibre	100% Non-virgin Type 6 Nylon
Colour System	100% Solution Dyed
Machine Gauge	1/10
Pile Thickness	4.5mm +/- 0.5mm
Total Thickness	8.5mm +/- 0.5mm
Tile Size	25cm x 100cm
Area of Use	Commercial – Heavy Duty
Lifetime Antimicrobial	Intersept®
Soil/Stain Protection	Protekt ² ®
Total Recycled Content	GlasBac® 65% to 70% recycled content GlasBac®RE 80% to 85% recycled content
Installation Methods	Ashlar, Herringbone



Ashlar



Herringbone

HN850™

Style Code	7615 Pattern 000
Product Definition	Tufted Textured Tip Sheared Loop
Yarn/Fibre	100% Non-virgin Type 6 Nylon
Colour System	100% Solution Dyed
Machine Gauge	1/10
Pile Thickness	4.5mm +/- 0.5mm
Total Thickness	8.5mm +/- 0.5mm
Tile Size	25cm x 100cm
Area of Use	Commercial – Heavy Duty
Lifetime Antimicrobial	Intersept®
Soil/Stain Protection	Protekt ² ®
Total Recycled Content	GlasBac® 65% to 70% recycled content GlasBac®RE 80% to 85% recycled content
Installation Methods	Ashlar, Herringbone



Ashlar



Herringbone



CoolCarpet™
Intersept®

Production specifications are subject to normal manufacturing tolerances and may be changed without notice. Slight variation in colour among different production lots are normal and should be considered in the overall installation plan. Products covered by manufacturer's written warranty only. All other warranties, including without limitation any implied warranties of merchantability or fitness for particular purpose, are hereby disclaimed. Contact your representative for written warranty information. Recycled content calculations are based on historical averages by total weight of the product for backings. Yarn/Fibre recycled content calculation excludes backing. We update our recycled content information and other environmental data regularly to reflect changes and advancements in our technology.

*Cool Carpet is not a standard option in Australia and New Zealand.

www.interface.com

South East Asia

Interface Asia
tel: 65-6478 1510
www.interface.com

South Korea

tel: 82-2-555 1734
www.interface.com

Japan

Interface Japan
tel: 81-3-5733 5211
www.interface.com

India

Interface India
tel: 91 80 30589350
www.interface.com

Beijing Studio

Interface China
tel: 86-10-6590 7810
www.interface.com.cn

Hongkong Studio

Interface China
tel: 852-2802 0838
www.interface.com.cn

Shanghai Studio

Interface China
tel: 86-21-6340 3868
www.interface.com.cn

Australia

Interface Australia
local toll free: 1800 008 101
www.interface.com.au

06/2014



Mission Zero:

our promise to eliminate any
negative impact our company
may have on the environment
by the year 2020.