



# Works Eon

**Interface**<sup>®</sup>

Works Eon™

---

**Works Eon. Tone, texture, timeless.**

Travelling through the unending space of time, not defined by a moment, classics are born. Works Eon captures that ethereal flowing nature of the cosmos, creating timeless spaces. Merging durable, handwoven textures with seamless, organic patterns, Works Eon is here creating exciting new possibilities.

Not only is it designed to look good, it's designed to last. With a minimalist profile achieved by a denser construction, it is engineered to deliver superior performance in areas of high footfall.

Works Eon is our latest addition to Works Series and is tied into that one vision – working smarter together for every space. Every detail of Works Series merges to give greater versatility and drive value, without costing the earth.

Combined with your ideas, each floor can create +Positive spaces™ which help their users thrive by letting them live, work, learn and regain inspiration every day. Each Works Series tile will prove to be the smart move for our planet's future too. As with every Interface product, they are Carbon Neutral, so they help you lower your carbon footprint with one positive step.







**Carpet Tile** Works Eon **Colour** Ebony **Installed** Herringbone  
**LVT** Drawn Lines **Colour** Bronze **Installed** Ashlar

[www.interface.com](http://www.interface.com)



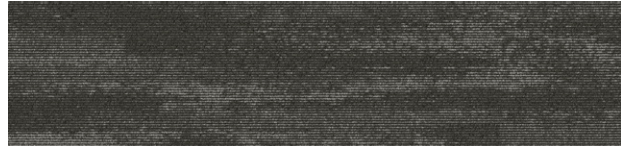
**Carpet Tile** Works Eon **Colour** Cinder, Raven **Installed** Ashlar  
**LVT** Textured Stones **Colour** Medium Concrete **Installed** Monolithic







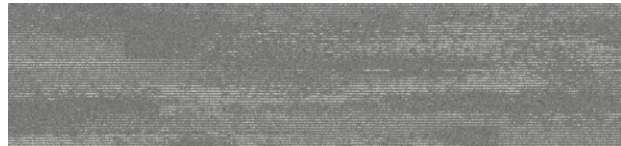
## Works Eon™ Colourline



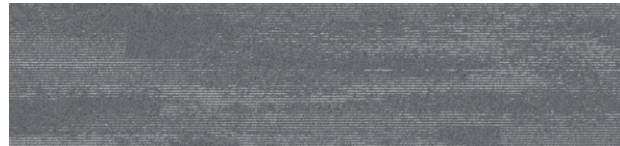
2458-001-000 Ebony



2458-007-000 Raven



2458-002-000 Dust



2458-008-000 Cinder



2458-003-000 Vapor



2458-009-000 Haze



2458-004-000 Sable



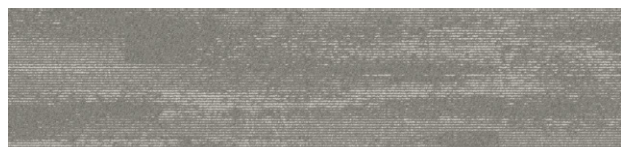
2458-010-000 Twilight



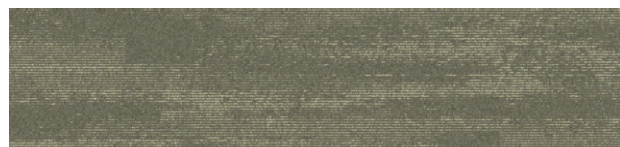
2458-005-000 Fawn



2458-011-000 Ash



2458-006-000 Mink

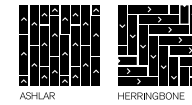


2458-012-000 Fennel

## Specifications

### Works Eon™

Style Code	2458
Product Construction	Tufted Textured Loop
Yarn System	100% Solution Dyed Nylon
Machine Gauge	1/12
Pile Thickness	2.0mm +/- 0.5mm
Total Thickness	5.0mm +/- 0.5mm
Tile Size	25x100cm
Area of Use	Commercial - Heavy Use
Lifetime Antimicrobial	Intersept®
Soil/Stain Protection	Protekt2®
Installation Methods	Ashlar, Herringbone



ASHLAR

HERRINGBONE



Carbon Neutral Floors™

All of our products are carbon neutral and our programme is verified by an independent third party, Bureau Veritas.



All Interface manufacturing facilities in the Asia Pacific region maintain registration to ISO 9001 Quality Management Systems and ISO 14001 Environmental Management Systems.

Production specifications are subject to normal manufacturing tolerances and may be changed without notice. Slight variation in colour among different production lots are normal and should be considered in the overall installation plan. Products covered by manufacturer's written warranty only. All other warranties, including without limitation any implied warranties of merchantability or fitness for particular purpose, are hereby disclaimed. Contact your representative for written warranty information.



**[www.interface.com](http://www.interface.com)**

**Australia**

Interface Australia  
local toll free: 1800 804 361

**India**

Interface India  
tel: +91 80 4613 1313

**South East Asia**

Interface Asia  
tel: +65 6478 1510

**South Korea**

Interface South Korea  
tel: +82 2 555 1734

**Japan**

Interface Japan  
tel: +81 3 5733 5211

**Beijing**

Interface China  
tel: +86 10 6590 7810

**Hong Kong**

Interface China  
tel: +852 2802 0838

**Shanghai**

Interface China  
tel: +86 21 6340 3868

1/2020  
SF2458T0



Climate change is undeniable. And reversible. Our mission is to prove it.  
**Join the #ClimateTakeBack and help create a climate fit for life.**