



Urban Retreat™

Interface®

Interface is everywhere. We manufacture in eight facilities on four continents. With a history of honoring the local culture and style, we introduce a new collection that synthesizes a developing worldview. Urban Retreat. Made Locally. Shared Globally.

There's a growing global community moving to the cities to live, work, and play because being connected goes beyond the latest technology to real proximity to the people and energy at the center.

And with the move, a new aesthetic emerges for an urban future that is technologically versatile, environmentally responsible and includes nature as the source and reminder of true inspiration.

Urban Retreat is a collection of nine styles sorted into pattern studies that range from refined textures to broad organic forms—all offered in a complimentary color palette.

Urban Retreat explores where concrete gives way to grass and looks at the deeply carved character of an old growth tree set against the architecture of a manmade grid.

Sparks fly when such disparate ideas sit side by side and Urban Retreat ignites.



## Urban Retreat™ One

---

We see the city as a mash-up of sharp and blurred, classic and futurist, eclectic and austere. Right now we are most interested in that place where one idea meets the other and vibrations occur.

Urban Retreat One explores that space at the edge and in between. A progressive color story provides a few elements that can be assembled to explore ideas about color, form and the transitions from one to the other.

Urban Retreat One has three patterns. There are eight colorways in a complex primary pattern and eight boldly mixed colors in a transitional pattern. They share four accent tiles that link and separate each pattern at your discretion. Go ahead, mash it up.

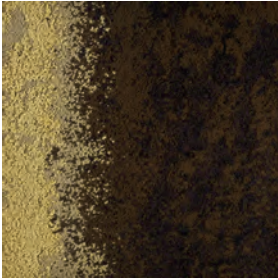




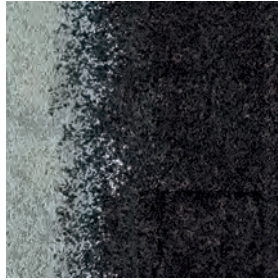
PRODUCT UR101 COLOR 103505 FLAX/GRASS INSTALLED PATTERN BY TILE;  
PRODUCT UR102 COLOR 102995 FLAX INSTALLED NON DIRECTIONAL;  
PRODUCT UR103 COLOR 100641 GRASS INSTALLED NON DIRECTIONAL

## UR101™ Colorline

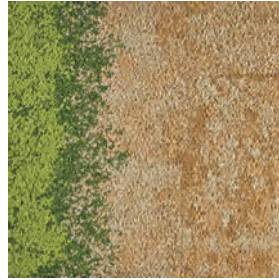
---



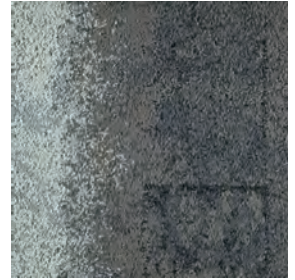
103501 BARK/MOSS



103502 CHARCOAL/LICHEN



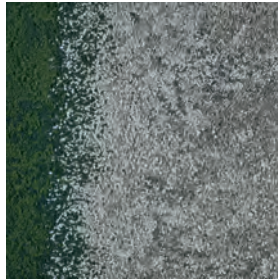
103503 STRAW/GRASS



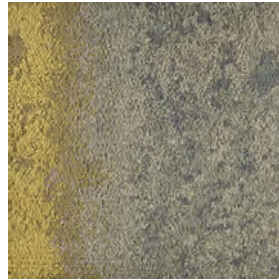
103504 GRANITE/LICHEN



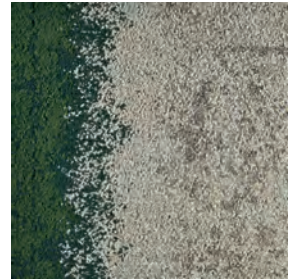
103505 FLAX/GRASS



103506 STONE/IVY



103507 SAGE/MOSS



103508 ASH/IVY

## Specifications

---

Modular, 50cm x 50cm	127110250H
Backing System	GlasBac®RE Tile
Yarn Manufacturer	Aquafil
Yarn System	100% Recycled Content Type 6 Nylon
Color System	100% Solution Dyed
Construction	Tufted Pattern Loop
Lifetime Antimicrobial	Intersept®
Soil/Stain Protection	Protekt <sup>2</sup> ®
Pile Thickness	0.139 in., 3.5 mm
Pile Density	6,734
Total Recycled Content	88% (24% Post-Consumer)



NON-DIRECTIONAL



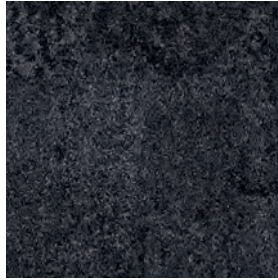
PRODUCT UR101 COLOR 103504 GRANITE/LICHEN INSTALLED PATTERN BY TILE;  
PRODUCT UR102 COLOR 102994 GRANITE INSTALLED NON DIRECTIONAL



## UR102™ Colorline



102991 BARK



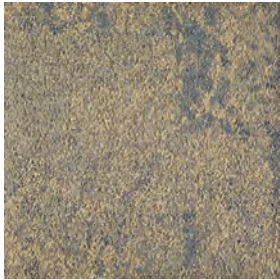
102992 CHARCOAL



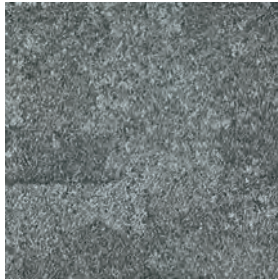
102993 STRAW



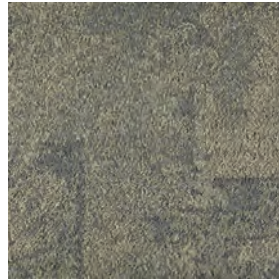
102994 GRANITE



102995 FLAX



102996 STONE



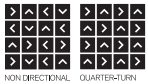
102997 SAGE



102998 ASH

## Specifications

Modular, 50cm x 50cm	127100250H
Backing System	GlasBac®RE Tile
Yarn Manufacturer	Aquafil
Yarn System	100% Recycled Content Type 6 Nylon
Color System	100% Solution Dyed
Construction	Tufted Pattern Loop
Lifetime Antimicrobial	Intersept®
Soil/Stain Protection	Protekt <sup>2</sup> ®
Pile Thickness	0.13 in., 3.3 mm
Pile Density	7,200
Total Recycled Content	88% (24% Post-Consumer)



NON-DIRECTIONAL QUARTER-TURN



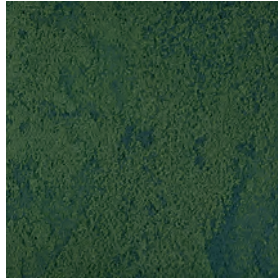
PRODUCT UR103 COLOR 100638 LICHEN INSTALLED NON DIRECTIONAL

## UR103™ Colorline

---



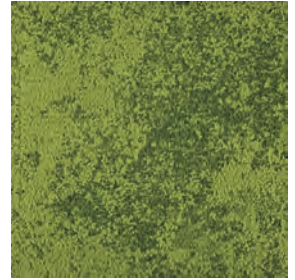
100638 LICHEN



100639 IVY



100640 MOSS

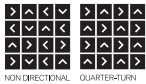


100641 GRASS

## Specifications

---

Modular, 50cm x 50cm	127120250H
Backing System	GlasBac®RE Tile
Yarn Manufacturer	Aquafil
Yarn System	100% Recycled Content Type 6 Nylon
Color System	100% Solution Dyed
Construction	Tufted Pattern Loop
Lifetime Antimicrobial	Intersept®
Soil/Stain Protection	Protekt <sup>2</sup> ®
Pile Thickness	0.141 in., 3.6 mm
Pile Density	7,149
Total Recycled Content	88% (25% Post-Consumer)



NON-DIRECTIONAL    QUARTER-TURN

## Urban Retreat™ Two

---

Because we are chic and smart, we admire architecture of concrete, glass and steel. Because we are curious, we crave the unexpected shifts of nature's patterns and colors. And because we are of this age, we've decided we must have it all.

Urban Retreat Two collects the orderly and the organic in an exquisitely restrained palette. A simple grid and understated cord share space with an eccentric texture like the bark of an ancient tree. Mixing these patterns accentuates the differences in scale, volume and movement, revealing precisely what is special about each.

Urban Retreat Two presents three patterns. A shared neutral palette of eight colorways is drawn from the familiar and encourages nuanced studies in texture.





## UR201™ Colorline

---



101888 BARK



101889 CHARCOAL



101890 STRAW



101891 GRANITE



101892 FLAX



101893 STONE



101894 SAGE



101895 ASH

## Specifications

---

Modular, 50cm x 50cm	126930250H
Backing System	GlasBac®RE Tile
Yarn Manufacturer	Aquafl
Yarn System	100% Recycled Content Type 6 Nylon
Color System	100% Solution Dyed
Construction	Tufted Sheared
Lifetime Antimicrobial	Intersept®
Soil/Stain Protection	Protekt <sup>2</sup> ®
Pile Thickness	0.187 in., 4.7 mm
Pile Density	5,390
Total Recycled Content	88% (25% Post-Consumer)



ASHLAR QUARTER TURN





## UR202™ Colorline



102959 BARK



102960 CHARCOAL



102961 STRAW



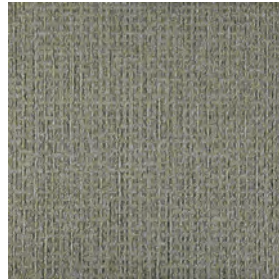
102962 GRANITE



102963 FLAX



102964 STONE



102965 SAGE



102966 ASH

## Specifications

Modular, 50cm x 50cm	126980250H
Backing System	GlasBac®RE Tile
Yarn Manufacturer	Aquafl
Yarn System	100% Recycled Content Type 6 Nylon
Color System	100% Solution Dyed
Construction	Tufted Pattern Loop
Lifetime Antimicrobial	Intersept®
Soil/Stain Protection	Protekt <sup>2</sup> ®
Pile Thickness	0.127 in., 3.2 mm
Pile Density	7,087
Total Recycled Content	88% (24% Post-Consumer)



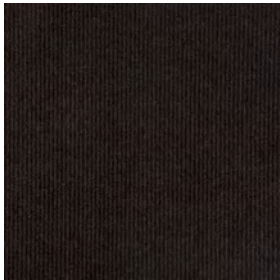
MONOLITHIC QUARTER TURN



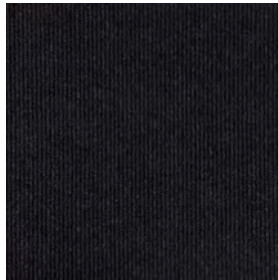
PRODUCT UR203 COLOR 101396 FLAX INSTALLED QUARTER-TURN

## UR203™ Colorline

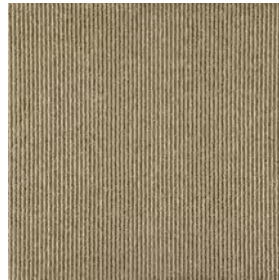
---



101392 BARK



101393 CHARCOAL



101394 STRAW



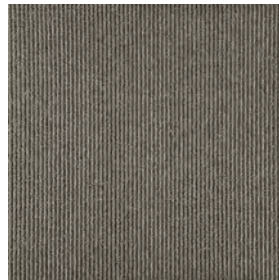
101395 GRANITE



101396 FLAX



101397 STONE



101398 SAGE



101399 ASH

## Specifications

---

Modular, 50cm x 50cm	126970250H
Backing System	GlasBac®RE Tile
Yarn Manufacturer	Aquafil
Yarn System	100% Recycled Content Type 6 Nylon
Color System	100% Solution Dyed
Construction	Tufted Pattern Loop
Lifetime Antimicrobial	Intersept®
Soil/Stain Protection	Protekt <sup>2</sup> ®
Pile Thickness	0.124 in., 3.1 mm
Pile Density	7,258
Total Recycled Content	88% (24% Post-Consumer)



QUARTET™

## Urban Retreat™ Three

---

Elegance slips in quietly and confidently. At first blush, she seems modest and restrained. But as she moves slowly and deliberately through the space, her audience is beguiled by the details of her composition.

Enter Urban Retreat Three, a conspiracy of refined textures that are destined to seduce. The most uncommon of the three blankets the floor in shifting shades with the finest fissures, like French limestone that is somehow soft. A shimmering linen-like textile balances the set with a graceful scale. And it is the unadorned finish of the last that conveys the essence of Urban Retreat Three.

The three patterns in Urban Retreat Three share the same eight hues found in Urban Retreat Two. And both pair quite elegantly with Urban Retreat One.

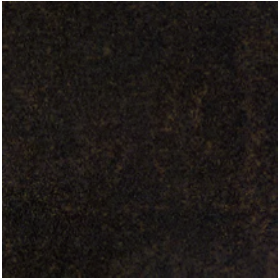




PRODUCT UR301 COLOR 103523 SAGE INSTALLED NON DIRECTIONAL

## UR301™ Colorline

---



103517 BARK



103518 CHARCOAL



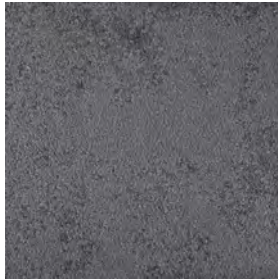
103519 STRAW



103520 GRANITE



103521 FLAX



103522 STONE



103523 SAGE



103524 ASH

## Specifications

---

Modular, 50cm x 50cm	127130250H
Backing System	GlasBac®RE Tile
Yarn Manufacturer	Aquaflil
Yarn System	100% Recycled Content Type 6 Nylon
Color System	100% Solution Dyed
Construction	Tufted Sheared
Lifetime Antimicrobial	Intersept®
Soil/Stain Protection	Protekt <sup>2</sup> ®
Pile Thickness	0.102 in., 2.9 mm
Pile Density	8,283
Total Recycled Content	88% (24% Post-Consumer)



NON-DIRECTIONAL

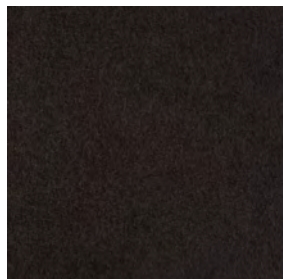


PRODUCT UR302 COLOR 102988 STONE INSTALLED MONOLITHIC

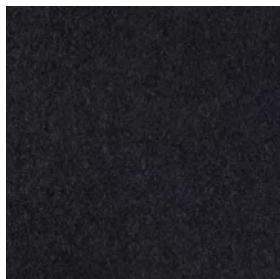


## UR302™ Colorline

---



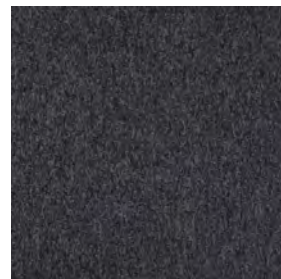
102983 BARK



102984 CHARCOAL



102985 STRAW



102986 GRANITE



102987 FLAX



102988 STONE



102989 SAGE



102990 ASH

## Specifications

---

Modular, 50cm x 50cm	127000250H
Backing System	GlasBac®RE Tile
Yarn Manufacturer	Aquafil
Yarn System	100% Recycled Content Type 6 Nylon
Color System	100% Solution Dyed
Construction	Tufted Pattern Loop
Lifetime Antimicrobial	Intersept®
Soil/Stain Protection	Protekt <sup>2</sup> ®
Pile Thickness	0.092 in., 2.3 mm
Pile Density	8,217
Total Recycled Content	88% (23% Post-Consumer)



MONOLITHIC QUARTER TURN



PRODUCT UR303 COLOR 102970 GRANITE INSTALLED MONOLITHIC

## UR303™ Colorline

---



102967 BARK



102968 CHARCOAL



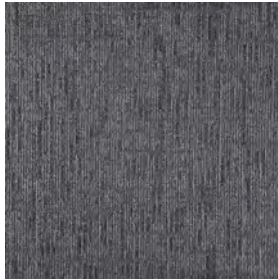
102969 STRAW



102970 GRANITE



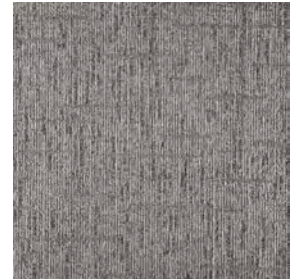
102971 FLAX



102972 STONE



102973 SAGE



102974 ASH

## Specifications

---

Modular, 50cm x 50cm	126990250H
Backing System	GlasBac®RE Tile
Yarn Manufacturer	Aquafil
Yarn System	100% Recycled Content Type 6 Nylon
Color System	100% Solution Dyed
Construction	Tufted Sheared
Lifetime Antimicrobial	Intersept®
Soil/Stain Protection	Protekt <sup>2</sup> ®
Pile Thickness	0.102 in., 2.6 mm
Pile Density	8,118
Total Recycled Content	88% (24% Post-Consumer)

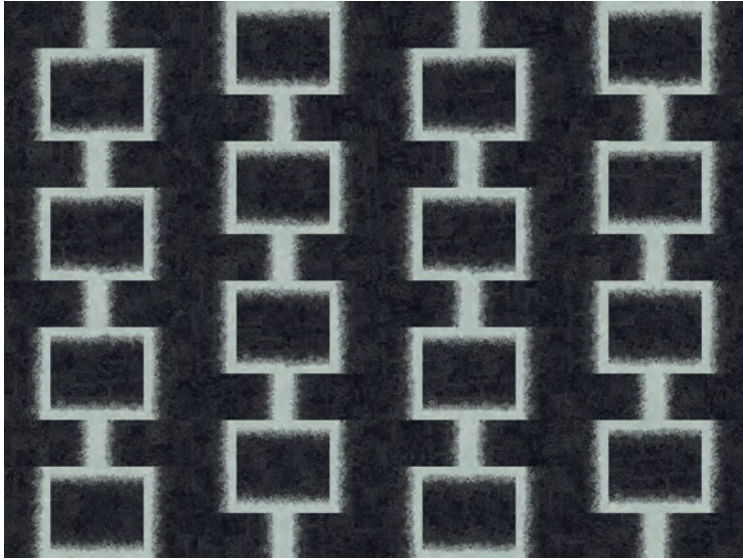


MOKULIM

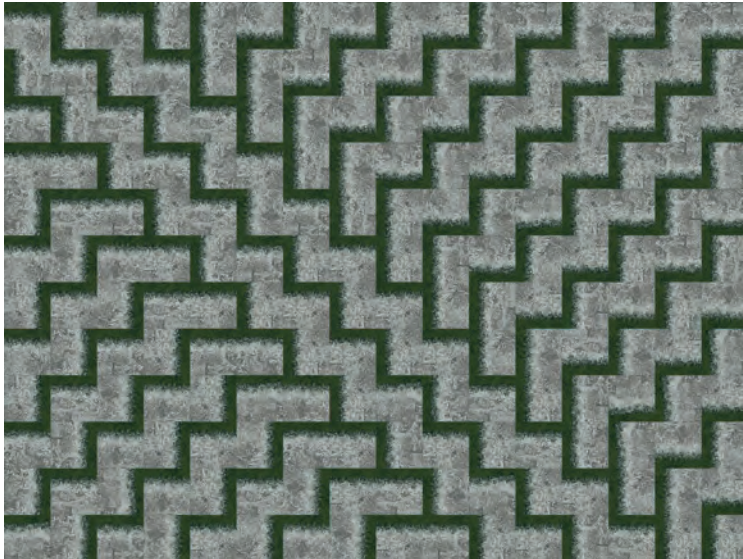
## Design Ideas

Use the layout suggestions below to create your own unique floor designs.

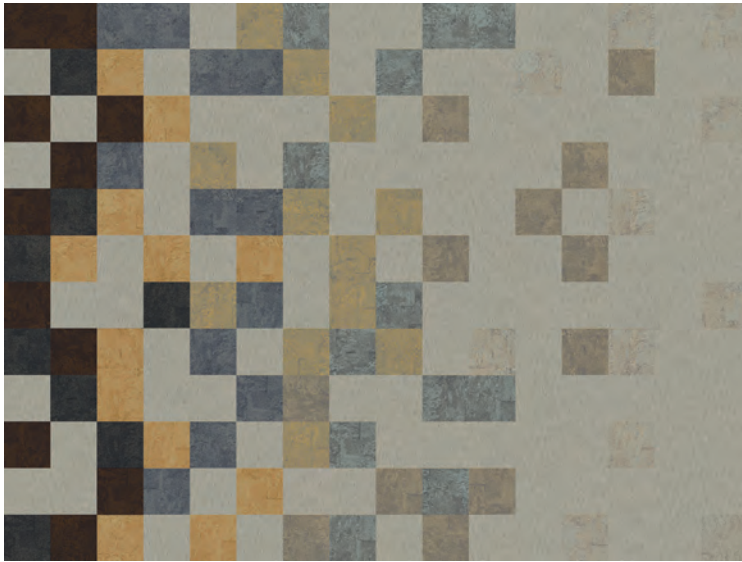
---



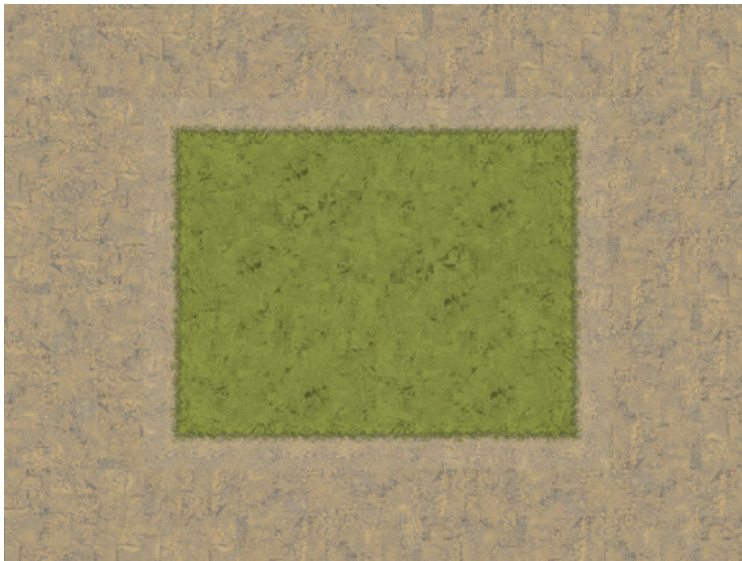
**PRODUCT** UR101 **COLOR** 103502 CHARCOAL/LICHEN **INSTALLED** PATTERN BY TILE  
**PRODUCT** UR102 **COLOR** 102992 CHARCOAL **INSTALLED** NON DIRECTIONAL



**PRODUCT** UR101 **COLOR** 103506 STONE/IVY **INSTALLED** PATTERN BY TILE



**PRODUCT UR102** **COLORS** 102991 BARK, 102992 CHARCOAL, 102993 STRAW, 102994 GRANITE, 102995 FLAX, 102996 STONE, 102997 SAGE, 102998 ASH **INSTALLED** NON DIRECTIONAL  
**PRODUCT UR302** **COLOR** 102990 ASH **INSTALLED** MONOLITHIC



**PRODUCT UR101** **COLOR** 103505 FLAX/GRASS **INSTALLED** PATTERN BY TILE  
**PRODUCT UR102** **COLOR** 102995 FLAX **INSTALLED** NON DIRECTIONAL  
**PRODUCT UR103** **COLOR** 100641 GRASS **INSTALLED** NON DIRECTIONAL

## Why Our Modular Carpet?



### Modular Carpet Tile

#### *Performance and Flexibility.*

Interface's standard backing systems set the industry standard for modular performance. Tiles stay on the floor with no upcurl, no tapping and no rippling effect, yet are easy to selectively replace. Our modular carpet is also easier to handle, install and maintain than bulky roll carpet. And, it installs with less waste so you save time and money — 3-4% for typical modular carpet compared to an average waste factor of 14% for traditional roll carpet.



### Cool Carpet™

#### *The Low Carbon Option*

Help stop climate change. ALL Interface modular carpet sold in North America is third party verified climate neutral Cool Carpet. We start by using low-carbon materials and manufacturing processes, then Cool Carpet zeros out all remaining greenhouse gas (GHG) emissions associated with the entire lifecycle of your carpet, from raw material extraction through use and recycling.



### TacTiles®

*No Glue Installation.* Our revolutionary TacTiles installation system eliminates the need for glue, adhering tiles securely together to form a floor that "floats" for greater flexibility, easier replacement and long-term performance. The result? Less mess, less waste and virtually no VOCs, not to mention an environmental footprint that is over 90% lower than that of traditional glue adhesives.

### Samples

Order samples at [www.interface.com](http://www.interface.com). You'll receive email order confirmations, 24/7 access to order status and more. Not near a computer? You can also request samples by calling one of the numbers below.

United States 1.877.605.1500	Canada 1.866.398.3192
Brazil + 55 11 2196 0900	Latin America + 52 55 6395 5100

### [www.interface.com](http://www.interface.com)

Register at [www.interface.com](http://www.interface.com) to:

- Browse products and order samples
- View carpet in a variety of room scenes
- Browse Floor Designs, change colors and view as a grid or in a room.
- Use our LEED Calculator
- Check order status and inventory availability
- Sign up to get the latest information on Interface products and news

### InterCircle™ Sample Return

Help us close the loop on the carpet sampling process. Through our InterCircle Sample Return program, sample materials stay out of the landfill and are re-used as samples until it is time to recycle them into new carpet. By reducing sample production material and diverting old materials from the landfill, we can reduce our overall environmental footprint.

Call 1.877.605.1500 (U.S.) or 1.866.398.3192 (Canada) to order a sample return bag with a prepaid return label.

### Third Party Certification

#### cool carpet™

**Cool Carpet** – Our third party verified carbon offset program zeroes out all greenhouse gas (GHG) emissions associated with the entire lifecycle of your carpet.



**Environmental Product Declaration (EPD)** – A statement of product ingredients and environmental impacts over the entire life cycle of a product. A comprehensive life cycle assessment (LCA) is performed to ISO standards to develop an EPD, after which both the EPD and LCA must be third party verified.



**Sustainable Carpet Assessment Standard (SCAS)** – The only carpet sustainability standard in North America that evaluates the environmental impact of carpet for its entire lifecycle.



**CRI Green Label Plus** – An independent testing program that identifies carpet and adhesives with very low emissions of VOCs to help improve indoor air quality.



### Intersept®

*Mold Protection.* Our proprietary preservative, Intersept, protects our modular carpet against mold growth and odor-causing bacteria — guaranteed. Intersept treated carpet, with proper maintenance, shows no mold or bacterial growth when tested per the ASTM E2471 Standard Test Method. Intersept is EPA approved for safe use in carpet, water insoluble and contains no halogens, heavy metals, phenols or formaldehyde.



### ReEntry®

*Recyclable is Now a Reality.* Through our ReEntry program and partnerships with our fiber suppliers and recycling centers throughout North America, separated Type 6 and 6,6 nylon are recycled into new 6 and 6,6 nylon, while separated GlasBac® and similar competitor backings are recycled into GlasBac®RE non-virgin PVC backing using our Cool Blue™ technology. The result? Products with up to 89% total recycled content, including as much as 27% post-consumer content.



### Sustainable Choice

*Environmental Responsibility.* More than 95% of Interface products manufactured in the Americas carry the GreenCircle Certified Environmental Facts label, which has verified that standard Interface products are manufactured using 99% renewable energy and offer a minimum of 66% and 80% total recycled content when backed with GlasBac® and GlasBac®RE backing respectively.

Transparency and certified sustainability leadership come standard on all Interface products, including published ingredients in HPDs (Health Product Declarations) or Declare Labels. In addition, more than 99% of our products globally have a published EPD (Environmental Product Declaration), which evaluates consistent factors based on full life cycle assessment (LCA). And, all Interface products with GlasBacRE backing meet the Platinum level of the NSF/ANSI 140 Sustainable Assessment for Carpet. GlasBac backed products meet the Gold level. NSF/ANSI 140 certified products contribute toward a USGBC or CaGBC LEED Credit.



MIX  
Paper from  
responsible sources  
FSC® C009723



PLEASE RECYCLE

All product specifications reflect averages derived from product sample testing, are subject to normal manufacturing and testing tolerances and inherent pattern variances, and may be changed without notice. For more information about these and other important attributes of the product(s) described herein, including recycled content and product warranty information, please see [www.interface.com/disclaimer](http://www.interface.com/disclaimer).

Printed on 50% post consumer waste (PCW) fiber manufactured using wind power.

We have tried our very best to accurately represent product colors. However, due to the nature of printed materials, color of actual products may vary slightly. Please request a sample to see actual product color.

[www.interface.com](http://www.interface.com)

**United States Headquarters**

1503 Orchard Hill Road  
LaGrange, GA 30240  
1.800.336.0225 ext. 56511

**Canadian Headquarters**

233 Lahr Drive  
Belleville, ON K8N 5S2  
1.800.267.2149 ext. 52128

**Brazilian Headquarters**

Rua Surubim, 577 - Conjuntos  
73/74 7º Andar  
04571-050 - São Paulo - SP  
+55 11 2196 0900

**Latin American Headquarters**

Montes Urales # 415 Piso 6  
Col. Lomas de Chapultepec  
México City, D.F. 11000  
Mexico  
+ 52 55 6395 5100

CIM # IFS00575 07/2017



**Mission Zero®**

our promise to eliminate any  
negative impact our company  
may have on the environment  
by the year 2020.