



Composure II

Interface®



Calm and subtle, now with more colours.

Composure's natural inspiration shows in the design and practical benefits. Inspired by natural rock formations, this collection has been designed with an organic, non-directional flexibility to connect and flow through large spaces with ease.

Composure II comprises of Composure Neutrals and Composure Colours. An extension of colours from the original and very much loved Composure. The refreshed palette takes on more neutral hues as well as a subtle wash of accents, both of which can be used in isolation or with tonal colours to create a transitional effect from light to dark.

Carbon Neutral Floors™. Manufactured in Australia. Like all our products globally, Composure II is carbon neutral. Join us in creating a climate fit for life. **#ClimateTakeBack**

+Positive spaces™

Better products. Happier people. Healthier planet.





Carpet Tile Composure Neutrals **Colour** Resolute **Installed** Non Directional
Carpet Tile Composure Colours **Colour** Navy **Installed** Non Directional

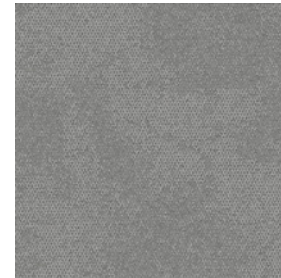


Carpet Tile Composure Neutrals **Colour** Placid **Installed** Non Directional
Carpet Tile Composure Colours **Colour** Eucalyptus **Installed** Non Directional
LVT Textured Woodgrains **Colour** Grey Dune **Installed** Ashlar

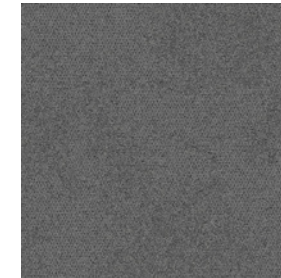




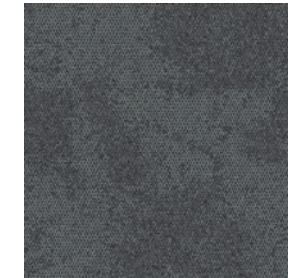
Composure Neutrals Colourline



2483-008-000 Calm



2483-007-000 Placid



2483-006-000 Resolute



2483-003-000 Steady



2483-001-000 Balance



2483-004-000 Equanimity



2483-005-000 Intrepid



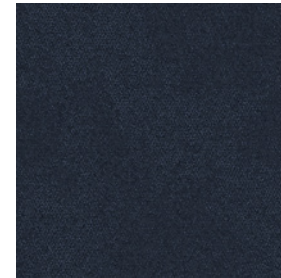
2483-002-000 Fortitude



Carpet Tile Composure Neutrals Colour Steady Installed Non Directional
Carpet Tile Composure Colours Colour Sapphire Installed Non Directional



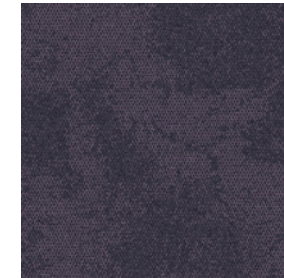
Composure Colours Colourline



2484-006-000 Navy



2484-001-000 Sapphire



2484-002-000 Aubergine



2484-004-000 Abyss



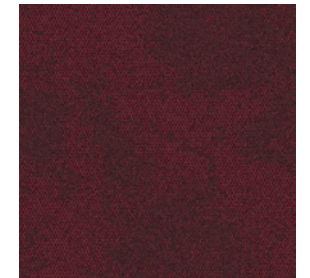
2484-007-000 Eucalyptus



2484-005-000 Olive



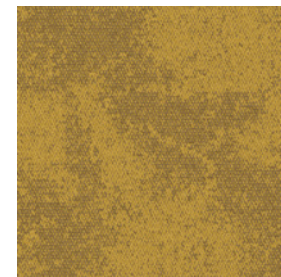
2484-008-000 Wine



2484-003-000 Berry



2484-009-000 Terracotta



2484-010-000 Mustard





Specifications

Composure Neutrals™

Style Code	2483
Product Construction	Tufted textured Loop
Yarn System	100% Solution Dyed Nylon
Machine Gauge	1/12
Pile Thickness	2.0mm +/- 0.5mm
Total Thickness	6.5mm +/- 0.5mm
Tile Size	50cm x 50cm
Area of Use	Commercial – Heavy Use
ACCS (Australia only)	Commercial Heavy Duty & Stairs
Lifetime Antimicrobial	Intersept®
Soil/Stain Protection	Protekt2®
Installation Methods	Non Directional



NON DIRECTIONAL

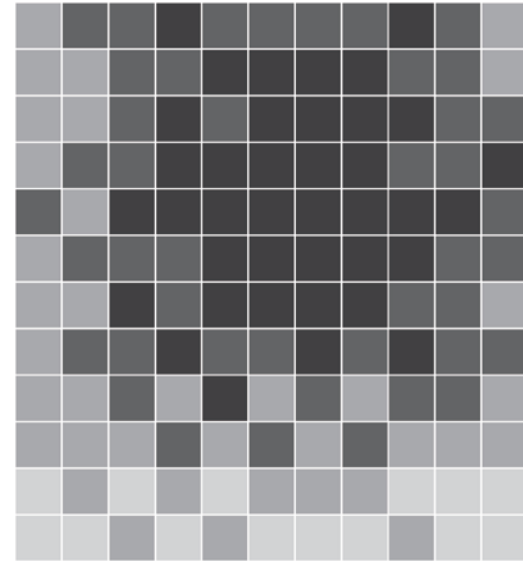
Composure Colours™

Style Code	2484
Product Construction	Tufted textured Loop
Yarn System	100% Solution Dyed Nylon
Machine Gauge	1/12
Pile Thickness	2.5mm +/- 0.5mm
Total Thickness	6.0mm +/- 0.5mm
Tile Size	50cm x 50cm
Area of Use	Commercial – Heavy Use
ACCS (Australia only)	Commercial Extra Heavy Duty & Stairs
Lifetime Antimicrobial	Intersept®
Soil/Stain Protection	Protekt2®
Installation Methods	Non Directional

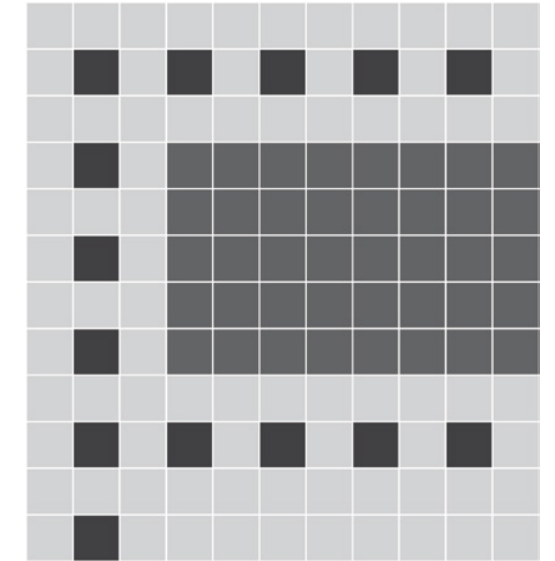


NON DIRECTIONAL

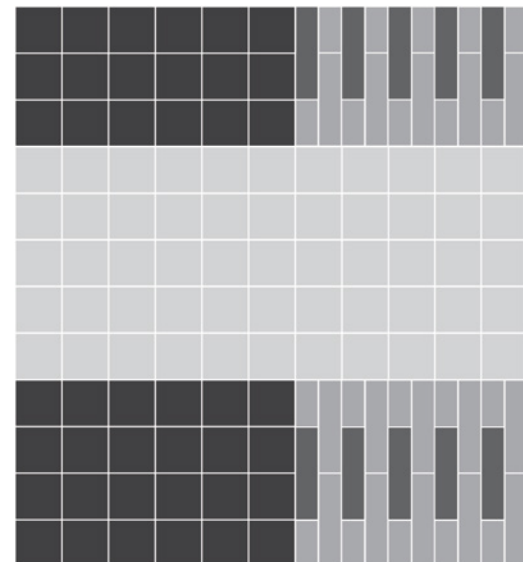
Design Ideas



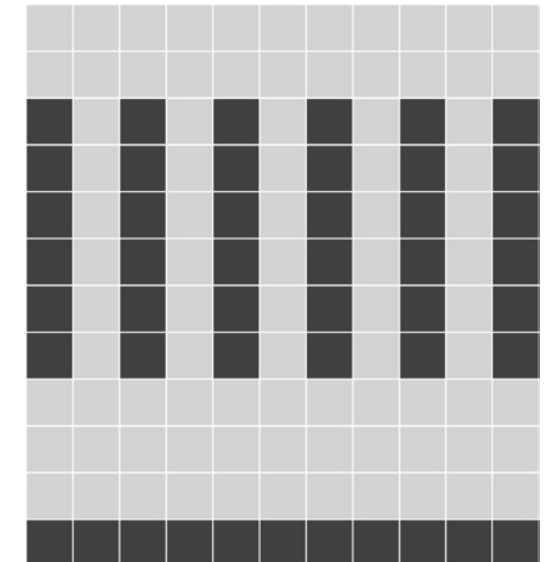
Carpet Tile Composure Neutrals **Colour** Fortitude **Installed** Design By Tile
Carpet Tile Composure Colours **Colour** Sapphire, Navy, Abyss **Installed** Design By Tile



Carpet Tile Composure Neutrals **Colour** Balance **Installed** Design By Tile
Carpet Tile Composure Colours **Colour** Mustard, Berry **Installed** Design By Tile



Carpet Tile Composure Colours **Colour** Olive, Eucalyptus **Installed** Non Directional
Carpet Tile Works Eon **Colour** Ash, Mink **Installed** Ashlar



Carpet Tile Composure Neutrals **Colour** Steady, Fortitude **Installed** Design By Tile

Why Our Modular Flooring?



Modular Flooring

Performance and flexibility. Interface's standard backing systems set the industry standard for modular performance. Tiles stay on the floor with no upcurl, no tapping and no rippling effect, yet are easy to selectively replace. Our modular carpet is easier to handle than bulky roll carpet and produces an average of just 2-5% waste compared to roll carpet's average of 15%. And it installs seamlessly with our LVT, no transition strips needed.



Carbon Neutral Floors™

Create a climate fit for life. All Interface flooring sold globally is third party verified carbon neutral across the entire product lifecycle. We've taken a holistic approach to achieve carbon neutrality, first through reducing the carbon footprint of our products and then using carbon offsets for the remainder, including the emissions from raw materials, our manufacturing processes and product use to end of life.



TacTiles®

No glue installation. Our revolutionary TacTiles installation system eliminates the need for glue, adhering tiles securely together to form a floor that "floats" for greater flexibility, easier replacement and long-term performance. The result? Less mess, less waste and virtually no VOCs, not to mention an environmental footprint that is over 90% lower than that of traditional glue adhesives.



Intersept®

Mold protection. Our proprietary preservative, Intersept, protects our modular carpet against mould growth and odour-causing bacteria—guaranteed. Intersept treated carpet, with proper maintenance, shows no mould or bacterial growth when tested as per the ASTM E2471 Standard Test Method. Intersept is EPA-approved for safe use in carpet, water insoluble and contains no halogens, heavy metals, phenols or formaldehyde.



Protekt®

Stain protection. The life and performance of your flooring is extended with Protekt, our patented stain resistant coating. Protekt uses advanced technology to provide a lasting barrier against permanent soiling and staining, which simplifies the cleaning process and enhances the longevity of your carpet.



ReEntry

At Interface, an end of life solution of our products is a reality. ReEntry is our innovative programme to reclaim materials used in our product. Taking back our product at end of life is a service we provide our customers to ensure that none of the products they use will end up in landfill. Whether it is recycling into new product or re-purposing, we see our customer's waste as an opportunity for new product life.



15-Year Warranty

Interface products are warranted for 15 years against excessive surface wear, edge ravel, backing separation, shrinking, stretching and static electricity even under castor chair conditions.



Manufactured in Australia

Offering local responsiveness and a global experience. We are embedded within the same communities as our customers to help us build relationships that are collaborative, committed and productive. We manufacture carpet tile out of South West Sydney, NSW from beginning to end, including inspection, boxing and shipment. You can be proud of contributing to our local economies and environment.

Third Party Certifications

Our EPDs and certifications contribute credits towards Green Building Council's Green Star® rating system.

Green Star credits are approved by the Green Building Councils of Australia and New Zealand. The internationally-recognised Green Star rating system provides independent verification that a building or community project is sustainable. Developed by the Green Building Council of Australia, Green Star is Australia's only national, voluntary, sustainability rating system for buildings and communities.



Environmental Product Declaration (EPD) –

The Environmental Product Declaration (EPD) is a third party verified environmental certification classified as Type III that quantifies and verifies the lifecycle impacts of products and goods according to the International Standards Organization (ISO) 14025, 14040, 14044 and EN 15804. EPDs help customers that are environmentally driven to evaluate the performance of a product and to make the best decision when choosing a product. All Interface products have EPDs.



Global GreenTag GreenRate Level A –

Global GreenTag's GreenRate certification is a product rating system recognised by the Green Building Council of Australia, New Zealand and South Africa. It has been set up to meet the criteria of the Green Star® "Sustainable Products" credits. All Interface products are certified "Level A".



Environmental Certification Scheme Level 4 –

ECS-certified carpet manufacturers must adhere to a code of practice that details performance standards for raw materials, manufacturing, in-service use and end-of-life treatment. Interface flooring holds the highest grading under ECS.



Best Practice Guidelines for PVC –

A comprehensive standard for better PVC developed by the Green Building Council of Australia under its Green Star programme. Interface holds Lloyd's Statement of Compliance (Green Building Council of Australia Best Practice Guidelines 2013) for Best Practice PVC for all products made in Australia.

All Interface manufacturing facilities in the Asia Pacific region maintain registration to ISO 9001 Quality Management Systems and ISO 14001 Environmental Management Systems.

Production specifications are subject to normal manufacturing tolerances and may be changed without notice. Slight variation in colour among different production lots are normal and should be considered in the overall installation plan. Products covered by manufacturer's written warranty only. All other warranties, including without limitation any implied warranties of merchantability or fitness for particular purpose, are hereby disclaimed. Contact your representative for written warranty information.

www.interface.com

Australia

Interface Australia
local toll free: 1800 804 361

India

Interface India
tel: +91 80 4613 1313

South East Asia

Interface Asia
tel: +65 6478 1510

South Korea

Interface South Korea
tel: +82 2 555 1734

Japan

Interface Japan
tel: +81 3 5733 5211

Beijing

Interface China
tel: +86 10 6590 7810

Hong Kong

Interface China
tel: +852 2802 0838

Shanghai

Interface China
tel: +86 21 6340 3868

09/2020
SF0126T0



Climate change is undeniable. And reversible. Our mission is to prove it. Join the #ClimateTakeBack and help create a climate fit for life.