

mission



Mission Zero:
our promise to eliminate
any negative impact our company
may have on the environment
by the year 2020.



INSTALLATION MANUAL

Contents

01 BEFORE STARTING	page 3
02 CONDITIONING OF MATERIALS	page 3
03 FLOOR PREPARATION	page 3
04 INSTALLATION SET OUT	page 6
05 ANTI-SLIP COMPOUND – INTER-TAC®	page 7
06 APPLICATION OF ADHESIVE	page 7
07 TACTILES	page 8
08 TACTILE PLACEMENT	page 8
09 TACTILE SUBFLOOR PREPARATION REQUIREMENTS	page 9
10 UNDERFLOOR HEATING	page 10
11 LAYING DIRECTION	page 10
12 COMMENCING THE INSTALLATION	page 10
13 ACCESS FLOORING	page 11
14 STAIRS	page 11
15 INSTALLING FIXTURES & FURNITURE AFTER MODULAR CARPET INSTALLATION	page 12
16 FINISH	page 12
17 CONCLUSION	page 12
18 CUSHIONBAC MODULAR CARPET	page 12
19 UNBACKED SHEET GOODS	page 13
20 INSTALLATION OVER UNDERLAY	page 13
SYSTEM 6+ 1M X 1M IMPERVIOUS SHEET SYSTEM	page 14

Appendices

01 CONCRETE SUBFLOOR REQUIREMENTS	page 16
02 MOISTURE & PH TEST RESULT RECOMMENDATIONS	page 17
03 INTERFACEFLOR INSTALLATION METHODS & CODES	page 18

Introduction

THIS MANUAL HAS BEEN PREPARED BY THE INTERFACEFLOR TECHNICAL DIVISION TO ASSIST PROFESSIONAL CONTRACTORS AND LAYERS IN THE INSTALLATION OF INTERFACEFLOR AND HEUGA MODULAR CARPET.

THESE INSTRUCTIONS COVER THE MOST COMMON INSTALLATION CIRCUMSTANCES. IF A PARTICULAR INSTALLATION CONDITION IS NOT COVERED, THE CONTRACTOR SHOULD CONTACT AN INTERFACEFLOR

REPRESENTATIVE.

IF INTERFACEFLOR OR HEUGA MODULAR CARPET IS INSTALLED BEFORE CONSTRUCTION IS COMPLETE, ANY RESULTING STAINING, SOILING, CONTAMINATION OR DAMAGE CAUSED BY BUILDING CONSTRUCTION MAY VOID THE END USER'S PRODUCT WARRANTY. THE CONTRACTOR SHOULD INFORM THE APPROPRIATE PERSON OF THIS WARRANTY IMPLICATION.

01 BEFORE STARTING

It is the responsibility of the contractor to verify, before the installation, that material supplied conforms to owner's specifications, including correct product, colour and quantity.

Labels on each carton contain important information including: product, colour and manufacturing batch (dye lot information).

It is not recommended to mix dye lots in the same area, with the exception of the i2™ collection of products as they possess mergable dye lots.

Take particular notice of installation codes printed on cartons as this indicates the manufacturers' recommended installation method. However the client's preferred installation method should be confirmed and signed off by the installer before commencement of installation.

02 CONDITIONING OF MATERIALS

The installation location and all products and materials used in the installation, must be at temperature between 15 degrees C – 35 degrees C for a period of 48 – 72 hours before the installation begins. The temperature must remain within this range throughout the installation. Relative humidity in the area should be 45% ± 10%.

03 FLOOR PREPARATION

The subfloor must be rigid, dry, smooth, flat, level, sound, clean and free from harmful materials. When installing GlasBac® modular carpet products, no bitumen based substance must come in contact with the GlasBac backing.

The subfloor must be rigid to stop modular carpet from cupping.

Old carpet, under felt, loose laid vinyl, cushion backed vinyl and any old adhesive must be removed and floor scraped clean.

A clean floor – Floor should be free from all dirt, dust and harmful materials. Before applying Intertac sweep and vacuum the subfloor to remove all dust. Concrete or timber floors must be primed with an approved primer such as 6S400 before application of Intertac.

A dry floor – All floors must be dry. New concrete floors must be checked for moisture as per AS/NZS2455. 1:2007.

Moisture content must not exceed levels as indicated in Appendix 1 of the InterfaceFLOR Installation Manual. **If the moisture content is above the recommended maximum readings STOP and DO NOT PROCEED with the installation. Seek further advice from InterfaceFLOR before proceeding.**

A low pH floor – The subfloor should have an alkalinity level of between pH7 & pH9 to be suitable for carpet installation. Test by wetting the floor with distilled water then using a pH test paper or meter. **Should the pH level be outside this range STOP and DO NOT PROCEED with the installation. Seek further advice from InterfaceFLOR before proceeding.**

Identify the Type of Floor

New concrete floors – Must be smooth and level as per Appendix 1.

Old concrete floors – Remove paint, sealer, grease, oil, adhesive and any harmful materials, especially bituminous based substances which are not compatible with GlasBac modular carpet products. All existing adhesive must be removed from the floor. Fill and level all cracks and holes. Bring surface up to specification as in Appendix 1 using an approved latex levelling compound eg. Ardex K15 or equivalent, in accordance with manufacturer's directions. This levelling compound needs to be compatible with the backing system.

Any existing carpet, under felt, loose laid vinyl, cushion back vinyl and all existing adhesive must be removed and the floor scraped clean.

Vinyl Tiles – Damaged & loose vinyl tiles must be replaced or patched and all existing wax coated products are to be removed. Any existing bituminous based adhesive or underlay are to be removed when installing GlasBac modular carpet products.

Ensure that the bond between vinyl tiles and subfloor will last the service life of the modular carpet.

If a sealer is used, any reaction shall be the contractor and end-user's responsibility.

Ceramic and quarry tiles – All joints are to be filled and levelled as per Appendix 1. Use rough Sandpaper to remove surface glaze.

Wood Floors – Unless the subfloor is free from grooves, ridges, gaps, holes or similar imperfections, the use of a hard underlay is recommended.



NOTE: WHEN INSTALLING NON IMPERVIOUS BACKED FLOOR COVERINGS, WATER BASED ADHESIVES, APART FROM PRESSURE SENSITIVE ADHESIVES, CANNOT BE USED ON A SEALED FLOOR.

Underlay – The underlay should be either reduced density, as per AS2458 medium density fibre board types MDF and MDFMR in accordance with BS1142, or medium density fibrous cement sheet known as hard underlay. The underlay and the fixing material must be compatible with the InterfaceFLOR modular carpet and Inter-Tac adhesive. Installation shall be in accordance with the underlay manufacturer's instructions.

Sealer / Moisture Barrier – If a sealer is used on a concrete floor it must be compatible with vinyl and can be either a solvent or water based sealer which can be acrylic, epoxy, urethane or chlorinated rubber. Sealers must also be used in accordance with manufacturer's directions. If in doubt, coat sealer on back of the tile and leave overnight. It is not suitable for use if it remains sticky.

An example of suitable products to use for sealing against Hydrostatic moisture problems would be - WPM300 from ARDEX or RL20 from RLA Polymers.

An example of a suitable product to use for sealing against new build green slab moisture problems would be - GS420 or PE420 from RLA Polymers.





04 INSTALLATION SET OUT

General

In setting up, a point in the room shall be determined from which modular carpet can be laid to ensure that they are parallel to the longest wall.

Procedure

The procedure for setting out shall be in accordance with the following, as shown in Figure 1.

Step 1

Mark a line EF parallel to the longest wall.

Step 2

Mark point X along line EF at a distance to ensure that the requirements of perimeter modular carpet are a minimum of $\frac{1}{3}$ width.

Step 3

Mark points J1 and J2 at a distance of 3 m each side of X.

Step 4

At J1 and J2 scribe an arc at a distance of 5 m to establish point K where arcs intersect.

Step 5

Draw a line through points K and X which will be 90 degrees to line EF.

Single Room Installation

Step 1

Establish two chalk lines at 90 degrees as shown in Figure 1. This line may be established slightly off centre to enable you to meet other requirements, such as placing uncut modular carpet in traffic areas.

Step 2

Commencing only at the cross point of the two chalk lines, complete one row of modular carpet on each side of the centre line.

Step 3

Anchor your basic installation as shown in Figure 2. Complete the body of the installation by laying in a triangular method.

Step 4

Complete the remaining quadrants, section by section.

NOTE: WHERE PRACTICAL THERE SHOULD BE UN-CUT MODULAR CARPET TILES IN DOOR WAYS AND HIGH TRAFFIC AREAS.

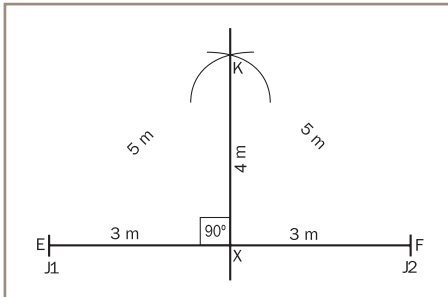


Figure 1

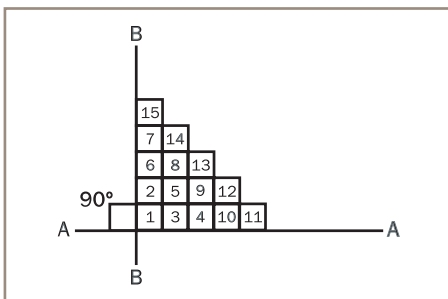
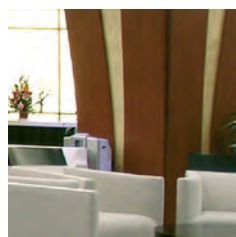


Figure 2



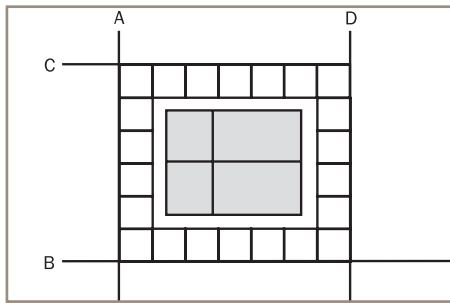


Figure 3a

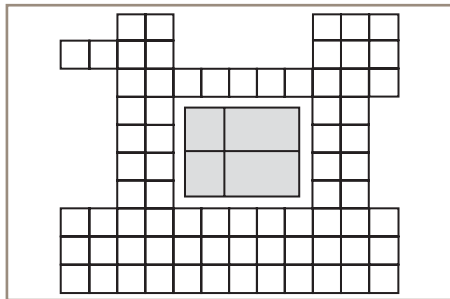


Figure 3b

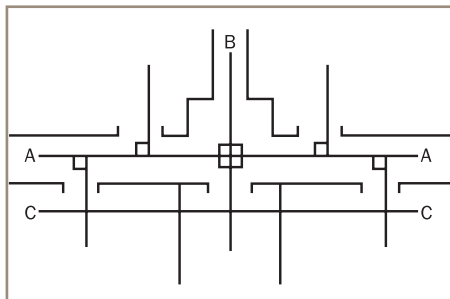


Figure 4

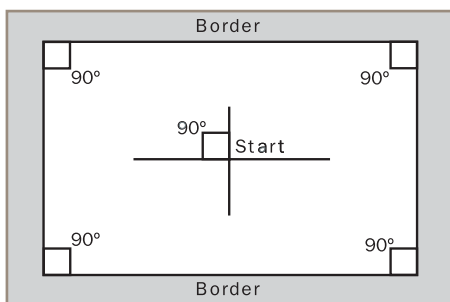


Figure 5

Large Area with Obstacles

Example: An Elevator

Step 1

Establish your starting point as shown in Figure 3a, with the A-B at 90 degrees.

Step 2

Pass your obstacle along line A and B with a minimum of 1 and 1/3 modular carpet. At this point you will establish line C and D, parallel to line B and A.

Step 3

Complete modular carpet between A and B. (Notice, only a single row of modular carpet is used for this exercise).

Step 4

Continue to anchor your installation. Fill in the remaining quadrants as shown in Figure 3b.

Office Complex

Step 1

The crossover point, centre corridor, centre hall is the starting point for this example as shown in Figure 4. Line A and B should again be at 90 degree angles.

Lay a row of modular carpet on each side along chalk line A. At the entrance of each office passed, a chalk line is projected into that office at 90 degrees. Complete your corridor including cutting.

Step 2

Lay the modular carpet into the offices and anchor the installation. This will create line C parallel to line A. The total installation is lined out. Complete the body of installation by laying in a triangular method as shown in Figure 3.

Step 3

Complete all cut modular carpet in the corridor, including door ways. Lay and anchor modular carpet along line C. Fill in the remaining parts.

Borders

Set out chalk lines at the required distance for the border and/or field colour modular carpet. Ensure all 90 degree angles are correct. Use these chalk lines as wall lines and cut modular carpet up to these lines. Cut border modular carpet in from chalk line to compensate for any irregularities in the wall. Refer to Figure 5.



05 ANTI-SLIP COMPOUND – INTER-TAC®

All InterfaceFLOR modular carpets require 100% application of Intertac unless utilising TacTile or otherwise specified by manufacturer.

Intertac is a low odour, solvent free pressure sensitive adhesive containing Intersept. (InterfaceFLOR anti-microbial additive)

The subfloor should be prepared to AS/NZS2455. 1:2007 requirements.

An approved primer such as GS400 must be used on all porous surfaces.

Before application of Intertac the subfloor should be vacuumed and washed to remove all dust from the subfloor.



NOTE: A NEW LONG NAP ROLLER SHOULD BE USED AT THE START OF EACH INSTALLATION.

NOTE: IN CERTAIN CONDITIONS, SUCH AS UNDER HOSPITAL BEDS, ON RAMPS OR IN AREAS THAT MAY BE SUBJECT TO HIGH TRAFFIC ABUSE, A STRONGER BOND TO THE SUBFLOOR MAY BE REQUIRED.

FOR A STRONGER BOND A HIGHER WEIGHT OF ADHESIVE SHOULD BE APPLIED :EG V1 NOTCH TROWEL. THE TILE IS THEN INSTALLED INTO SEMI-TACKED UP INTERTAC ADHESIVE ALLOWING FOR SOME ADHESIVE TRANSFER TO OCCUR.

NOTE : TACK UP TIME WILL BE RELEVANT TO HUMIDITY IN THE WORK AREA AND GENERAL SITE CONDITIONS.

06 APPLICATION OF ADHESIVE

Inter-Tac is a pressure sensitive compound. For general installation requirements application of Intertac is by long nap roller achieving a spread rate of 10-14m² per litre depending on the condition of the substrate. On non-porous floors the rate of application will change and a spread rate greater than 14m² per litre may be obtained in some cases.

Adhesive application should not commence until moisture and pH readings of the subfloor have been taken and the subfloor deemed within specified requirements. If the subfloor moisture or pH readings are higher than recommended the installation should not commence until remedial action is taken.

It is mandatory that Inter-Tac must tack up before use. Colour must change from green to clear and it must not transfer.

Users assume all risk and liability resulting from the use of Inter-Tac. It is recommended that users carry out project specific trials to confirm the suitability and application of Inter-Tac.

Note: A new long nap roller should be used at the start of each installation.

Note: In certain conditions a stronger bond to the subfloor may be required. For a stronger bond the tile can be installed into semi-tacked up Intertac adhesive allowing for some adhesive transfer to occur.



07 TACTILES™



NOTE: WHEN USING TACTILE IN A GLASBAC INSTALLATION THE TACTILE IS USABLE FOR TWO INSTALLATIONS AFTER WHICH A NEW TACTILE SHOULD BE USED.

NOTE: WHEN USING TACTILE IN A GRAPHLAR INSTALLATION THE TACTILE WILL REQUIRE REPLACEMENT FOR EACH INSTALLATION CHANGE.



NOTE: A TACTILE MUST BE APPLIED UNDER EVERY CUT TILE ABUTTING THE FIELD TILES.



NOTE: A TACTILE MUST BE APPLIED UNDER EVERY CUT TILE ABUTTING THE FIELD TILES.

Glasbac & GlasbacRE – TacTiles can be used in the installation of both GlasBac and GlasBacRE carpet tile. To lift existing carpet tiles simply peel the carpet tile from the TacTile and fit a new carpet tile to the existing TacTile.

TacTiles reach maximum bond strength after four hours.

TacTile can be installed directly over wood, ceramic, marble and stone floors with minimum floor preparation as long as moisture and pH levels are within InterfaceFLOR recommendations.

Once the installation is completed and then maintained in line with InterfaceFLOR installation and maintenance recommendations TacTiles will be effective for the life of the installation providing they are not removed or replaced.

Rolling Loads – TacTiles can be used under areas that will be subjected to normal commercial rolling load applications. Eg: Castor Chair, Hand Trolleys or similar.

For areas that will be subjected to heavy rolling loads such as pallet trolleys, fork lifts, scissor lifts, etc, please contact InterfaceFLOR Technical Services for project specific advice.

Ramps – TacTile is not recommended for use on ramped floor areas. The use of Intertac pressure sensitive adhesive is recommended when installing modular tile to ramped floor areas.

08 TACTILE PLACEMENT

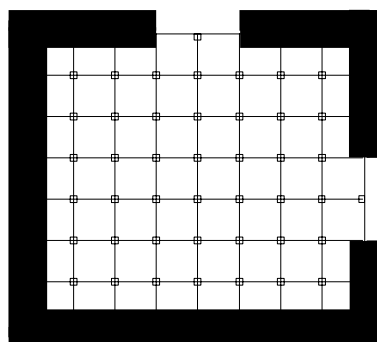
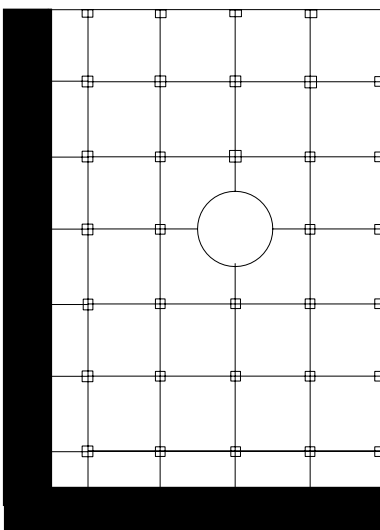
For Quarter Turn / Monolithic / Non Directional Installation methods

A TacTile should be placed under every corner of each tile across the installation area and all cut tiles abutting the field tiles.

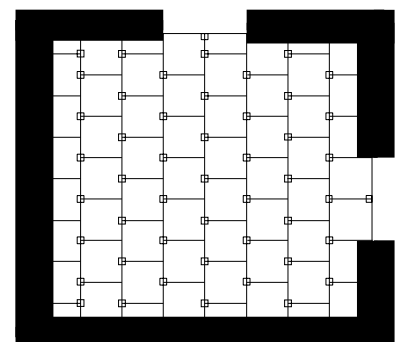
For Brick or Ashlar Installation methods

A TacTile should be placed on every other corner across the installation area and all cut tiles abutting the field tiles.

TacTiles should be applied based on the following diagrams.



Quarter-Turn / Monolithic / Non-Directional Installation methods will require 4 TacTiles per square metre



Brick or Ashlar Installation methods will require 4 TacTiles per square metre



NOTE: IF THE SUBFLOOR EXCEEDS THE REQUIRED MOISTURE AND PH REQUIREMENTS THE INSTALLATION OF A BARRIER COAT IS RECOMMENDED TO PREVENT FUTURE ISSUES FROM RISING MOISTURE AND PH.

FAILURE TO CARRY OUT THE CORRECT SUBFLOOR PREPARATION OR REMEDIAL WORKS MAY RESULT IN VOIDING OF THE PRODUCT WARRANTY.

TacTiles

Note: TacTiles are not recommended for installation of carpet tiles to stairs

Note: A TacTile must be applied under every cut tile abutting the field tiles.

Note: Glasbac & GlasbacRE Tile

TacTiles will be effective for the life of the installation providing they are not removed or replaced.

Where carpet tiles are replaced TacTiles will only be effective for 2 installation changes after which they need to be replaced to maintain the integrity of the installation.

Note: Graphlar Tile

TacTiles will be effective for the life of the installation providing they are not removed or replaced.

Where carpet tiles are replaced TacTiles will require replacement for each installation change to maintain the integrity of the installation.

09 TACTILE SUBFLOOR PREPARATION REQUIREMENTS

The subfloor requirements for a TacTile installation are the same as for any adhesive installation.

Please consult your InterfaceFLOR Installation manual for detailed recommendations.

TacTile can be installed directly over wood, ceramic, marble and stone floors with minimum floor preparation as long as moisture and pH levels are within InterfaceFLOR recommendations.

Notes on Subfloor Moisture and pH requirements

Moisture Content

Dependent on the testing method used the subfloor needs to be classified as "DRY".

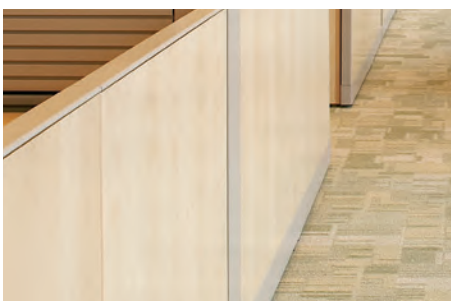
Test Methods

Hydrometer

Required to be 80% RH or less.

Subfloor pH requirement

The subfloor pH should be tested with a result of no more than pH 9.



10 UNDERFLOOR HEATING

InterfaceFLOR modular carpet may be installed on internally heated floors provided that the surface temperature will not exceed 27 degrees C.

Underfloor heating must be turned off 48 hours prior to commencement of installation and shall not be turned on again until 48 hours after installation is completed to allow the adhesive to set.



NOTE: ALL NEEDLE PUNCH PRODUCTS MUST BE INSTALLED QUARTER TURN.

11 LAYING DIRECTION

All InterfaceFLOR modular carpets should be installed as per the directions printed on the carton. Installation methods & codes printed on the cartons are:

DIR	Directional
QTR	Quarter Turn
RDM	Random
SPEC	Specification Methods. (Refer to diagrams on inside back cover)

If SPEC code appears on the carton please confirm with the client their preferred installation method.

It is the installers responsibility to confirm the installation method prior to commencement on installation.

12 COMMENCING THE INSTALLATION

Apply Inter-Tac as recommended. Lay one row of modular carpet down each side of the chalk line, then install the modular carpet using the stair method. This will quickly pin point if the grid is running out of alignment.

Alignment

As modular carpet is butted against each other, continually check (with fingers) that the joints are properly aligned. Do not install modular carpet that is out of square by more than 1mm.

Tension

Ensure an even tension throughout the installation as this is vital to the overall appearance.

Lack of tension and pile entrapment may cause poor performance and will impair the appearance of the finished installation.

Over tension of the installation may cause peaking of the tile.

The cumulative space gained in GlasBac or Graphlar® modular carpet products should be 5mm, measured over 11 modular carpet squares (10 joins). Any gain less than this may cause peaking and or buckling.

NOTE: MODULAR CARPET CUT ON AN ANGLE OR A CUT EDGE THAT IS EXPOSED TO HEAVY FOOT OR WHEELED TRAFFIC MAY NEED TO BE SEALED WITH LATEX.

NOTE : WHEN ABUTTING INTERFACEFLOR CARPET UP TO A HARD SURFACE FINISH OR EDGE TRIM THE TOP OF THE CARPET PILE SHOULD BE LEVEL WITH THE TOP OF THE HARD SURFACE OR EDGE TRIM. IF THE CARPET PILE SITS HIGHER THAN THE HARDSURFACE OR EDGE TRIM AND IS EXPOSED TO HIGH LEVELS OF TRAFFIC THIS MAY CAUSE DAMAGE TO THE CARPET EDGE.

NOTE: ON ACCESS FLOORS AN APPLICATION RATE FOR INTERTAC OF OVER 14 M² MAY BE ACHIEVED IN SOME CASES.

Cutting

All InterfaceFLOR modular carpet must be cut from the backing side by overlaying the modular carpet, marking and cutting. A template should be used around columns.

Step 1 Firstly effect a light cut without attempting to cut right through.

Step 2 Then crack the modular carpet along the line cut.

Step 3 Complete by cutting right through the fibres with a straight utility or hook knife.

13 ACCESS FLOORING

On Grid Access Flooring Installation – GlasBac®OG 600 x 600mm modular carpet

The installation of GlasBacOG differs from traditional on grid carpet laying in that you do not butt up the tiles to each other. Instead, installation is by placing the modular carpet locating buttons (attached to the backing) into the matching positioning holes on the access panel. Inter-Tac adhesive is not required. The locating buttons limit movement of tiles on the access panels.

Off Grid Access Flooring Installation – 500 x 500mm modular carpet

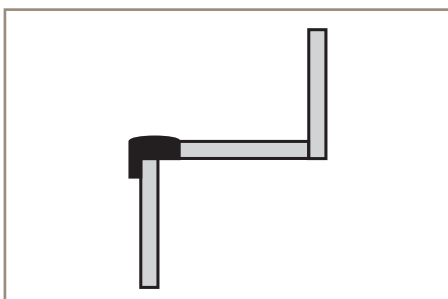
On access floors, off grid installation will mean that the edge of the modular carpet does not correspond with access floor panel joints.

Installation as per standard InterfaceFLOR modular carpet installation instructions.

Intertac adhesive and TacTile are both suitable for modular tile installation over access flooring.

On access floors an application rate for Intertac of over 14m² may be achieved in some cases.

NOTE: IT IS IMPORTANT TO BRING THE MODULAR CARPET RIGHT UP TO THE UNDERSIDE OF THE NOSING, FLUSH WITH THE TREAD, AS THIS WILL SUPPORT THE LEADING EDGE OF THE NOSING AND PREVENT IT ROCKING AND COMING LOOSE. DO NOT BEND MODULAR CARPET OVER THE EDGE OF STAIR STEPS.



14 STAIRS

Stairnosing

InterfaceFLOR modular carpet cannot be installed over the nose of a stair. A metal or rubber nosing must be installed.

Riser

Apply Inter-Tac to both the tile backing and the riser.

Allow Inter-Tac to tack up and place carpet for the riser in position.

Tread

Apply Inter-Tac to 100 per cent of tread.

The tread should be fitted after the riser to allow the tread carpet to hold the riser securely in position.

15 INSTALLING FIXTURES & FURNITURE AFTER MODULAR CARPET INSTALLATION

To avoid dislodging modular carpet during furniture and fixture placement, place standard sheets of plywood or cardboard over the complete installation.

If plastic type protection is used, any condensation is the responsibility of the contractor. Do not position adhesive tape on pile of modular carpet.



IT IS RECOMMENDED THAT ALL 12TH GAUGE PRODUCTS BE CHECKED THOROUGHLY FOR TUFT SPROUTS AND THAT ANY NOTICEABLE SPROUTS ARE NAPPED AS PART OF THE FINISHING PROCEDURE.

16 FINISH

Edge Restraint – In the event of an open perimeter area a fixed reducer strip anchored to the floor is recommended. The edge restraint should be the same height as the carpet and finish level with the carpet pile ensuring a smooth transition from one surface to the other.

Nap all slivers and tuft sprouts using napping shears.

It is recommended that all 12th gauge products be checked thoroughly for tuft sprouts and that any noticeable sprouts are napped as part of the finishing procedure.

Apply a final Vacuum or Pile Lifting process.

Ensure that the overall finished appearance is consistent throughout. Correct any defects including incorrect arrow direction.

Upon completion, a further vacuum or pile lift may be required. It is essential that lighting be in service to allow inspection under good lighting conditions.



ANY VARIANCE FROM ANY OF THESE INSTRUCTIONS WILL BECOME THE RESPONSIBILITY OF THE CONTRACTOR AND NOT THE MANUFACTURER AND SHALL VOID ALL OTHER WISE APPLICABLE WARRANTIES.

17 CONCLUSION

These installation procedures are recommended by the manufacturer and installation should only be carried out by experienced and competent carpet installers. Strict adherence to these procedures will result in a quality installation under most conditions. Any situation that can alter the installation procedure, such as the identification of defect material or unusual installation conditions, creates a responsibility for the contractor to notify both the owner and the manufacturer before proceeding.

Any variance from any of these instructions will become the responsibility of the contractor and not the manufacturer and shall void all other wise applicable warranties.

18 INTERFACEFLOR CUSHIONBAC™ MODULAR CARPET

Follow the same procedure as outlined for InterfaceFLOR modular carpet.

19 INTERFACEFLOR SHEET GOODS – UNBACKED

Apply 100% adhesive such as Roberts 95SF or Polymer 300. If installing to areas that will be subjected to excessive steam cleaning, ie.; hotel bar areas, gaming rooms etc., use adhesive such as Roberts 12SF or Polymer 365.

20 INSTALLATION OVER UNDERLAY

Bridgestone Airstep ‘SuportaPad’ or Dunlop ‘DB3’ Underlays

Prepare floor as outlined in Section 3, ensuring floor is primed using a product such as Roberts 370 or Polymer 6000 Primer.

Adhesion of Underlay to Subfloor

- 1 Before use, the underlay should be removed from its plastic packaging and fully unrolled for a period of no less than four hours. It is preferable that the product be left unrolled overnight.

Decide the position of the datum lines for alignment of modular carpet and offset the starting seam of the underlay by 200mm from this line.

- 2 The underlay should be bonded firmly to the subfloor with a product such as Roberts 656, using a 1.6mm x 1.6mm “V” notched trowel. For example, Roberts Switchblade V1.
- 3 The underlay should then be lowered into the adhesive when “tack up” is evident and rolled with a roller of no more than 25 – 30 kgs. This ensures the underlay is secured to the subfloor. All joins must be close fitting when positioned and excessive rolling should be avoided to allow curing of the adhesive.

Adhesion of InterfaceFLOR Modular Carpet

- 1 On the surface of the underlay follow the procedure as outlined in Section 4 for the Set Out using a pencil or waterproof marker.
- 2 Apply Roberts 656, or the equivalent adhesive, to the surface of the underlay using a 1.6mm x 1.6mm “V” notched trowel and allow to dry per manufacturer’s specifications before laying carpet into adhesive. In some conditions an air mover may be required to assist with tack up time.
- 3 Commence installing modular carpet as outlined in Section 8.
- 4 Roll completed installation using a roller no more than 25-30 kgs.
- 5 Finishing should be carried out in accordance with AS/NZS 2455.2 2007 Textile Floor Coverings – Installation Practice Part 2 Carpet Tiles and in line with the Manufacturer’s printed instructions.



NOTE: ADHESIVE SPREAD RATE WILL BE APPROX 5M² PER LITRE.

SYSTEM 6+ 1M X 1M IMPERVIOUS SHEET SYSTEM

INSTALLATION METHOD

The installation of 1m x 1m sheets to provide a moisture impervious installation can be carried out in the following installation methods:

Intertac

Utilising Intertac adhesive to hold the sheets in position and seam sealing of the carpet sheets to each other to provide impervious seams.

Freelay

Freelay of the sheet utilising the seam sealer to provide both impervious seams and also to hold the sheets in position.

Description of each method as follows -

Intertac Installation method

- 1 Vacuum / sweep the subfloor.
- 2 Apply InterfaceFLOR Floor Sealer as per recommendations.
- 3 If InterfaceFLOR Floor Sealer is not being used the subfloor should be primed with an acrylic based floor primer.
- 4 Set out the grid line for the 1m x 1m sheet.
- 5 Apply Intertac as per recommendations set out in the InterfaceFLOR Installation Manual.
- 6 Once the Intertac has tacked up install your first sheet to the grid line.
- 7 Apply a 3mm bead of seam sealer to the sheet edges being careful to only apply seam sealer to the sheet backing and not the yarn.
- 8 Install the next sheet by sliding the new sheet into the already installed sheet being careful not to force seam sealer up onto the yarn.
- 9 Follow this procedure for the balance of the area.

Note: Any seam sealer that gets onto the yarn or sheet face should be immediately removed.

Note: While still wet the seam sealer can be removed with water.

Note: When dry will require a solvent based seam sealer cleaner.



NOTES: ANY SEAM SEALER THAT GETS ONTO THE YARN OR SHEET FACE SHOULD BE IMMEDIATELY REMOVED.

WHILE STILL WET THE SEAM SEALER CAN BE REMOVED WITH WATER.

WHEN DRY WILL REQUIRE A SOLVENT BASED SEAM SEALER CLEANER.



NOTES: ANY SEAM SEALER THAT GETS ONTO THE YARN OR SHEET FACE SHOULD BE IMMEDIATELY REMOVED.

WHILE STILL WET THE SEAM SEALER CAN BE REMOVED WITH WATER.

WHEN DRY WILL REQUIRE A SOLVENT BASED SEAM SEALER CLEANER.

InterfaceFLOR Floor Sealer

Interface Floor Sealer is a water based modified acrylic compound for sealing concrete and other cementitious compounds.

When dry it cures to form an impervious film and displays excellent long term resistance to urine, water, blood and most common chemicals.

It complies with ASTM D 1308-87 for the resistance to urine.

Floor Sealer Application method

This sealer can be applied to all clean, sound concrete or cementitious surfaces

- 1 Floor must be absorbent. If the floor is not absorbent do not proceed with the installation.
- 2 Apply an even coat of Interface Floor sealer with a long nap roller with a pile height of no less than 10mm.
- 3 Allow Interface Floor sealer to dry for a minimum of 5 hours to the appearance of a clear film.
- 4 For highly absorbent floors a second coat may be required, allowing a minimum of five hours between coats.
- 5 Sealant film is not to be penetrated or its integrity compromised at any time.
- 6 Subsequent adhesive application to be applied after a minimum of 24 hours from final coat of Interface Floor sealer.

Note: The interface Floor Sealer product data Sheet should be referenced for further detail prior to commencement of application of the floor sealer.

Contact InterfaceFLOR for further detail if required.

InterfaceFLOR Seam Sealer

InterfaceFLOR Seam Sealer is a high strength water based seam sealing adhesive designed to provide a moisture impervious seam.

Seam Sealer Application method

- 1 Installation temperature of working area and substrate is to be a minimum of 10 degrees C and a maximum of 30 degrees C.
- 2 Carpet edges must be clean & dry.
- 3 Starting at one end of the seam apply a 3mm continuous bead to the base of the carpet sheet backing ensuring no sealer is on the yarn.
- 4 Slide the next sheet into the seam while the seam sealer is still wet ensuring that no seam sealer is forced up onto the yarn.
- 5 Remove any excess wet seam sealer with water on a clean damp cloth.
- 6 Allow seams to fully dry for 24 hours before allowing traffic.



NOTE: IN AREAS WHERE A FULLY SEALED FLOOR COVERING IS INSTALLED THE USE OF INTERFACEFLOR FLOOR SEALER IS NOT OBLIGATORY.

Seam Sealer Maintenance Requirements

- 1 If spillage on the seam occurs, prevent any traffic on the seam until the spillage has been cleaned and fully dried.
- 2 Clean spillage on seam immediately with water. If left for longer periods the sealer will attract dirt and may become difficult to remove.
- 3 Only water-based cleaners should come into contact with the seam.

APPENDICES

01 CONCRETE SUBFLOOR REQUIREMENTS

1 Construction

Concrete subfloor shall be finished off true to grade and in accordance with good building practice and shall be free from rising moisture as per AS2455-1995.

2 Surface

(a) Planeness

When a straight edge 3m long is placed on the surface at any position, no part of the surface is more than 5mm above or below the straight edge.

(b) Smoothness

When straight edge 150mm long is placed on the surface position, no part of the surface shall be more than 1 mm below the straight edge.

(c) Finish

New concrete floors shall be steel troweled to a smooth surface but not to a glass finish. They shall be free from score marks, grooves, depressions and scraped free of foreign materials.

3 Dryness

Before installation commences, the dryness of subfloor should be determined. For Interface and Heuga modular carpet the moisture content measured by Hygrometer shall not be greater than 70% RH for use of Intertac Pressure Sensitive adhesive or 80% RH for use of the Interface TacTile installation system. Moisture testing should be conducted by Hygrometer per AS/NZS2455. 1:2007 with the invasive RH test method preferred (The sealed hood RH test method should be used only if invasive method cannot be conducted). Interface do not recommend measuring substrate moisture content with any method other than Relative Humidity test methods.

IF THE MOISTURE CONTENT IS ABOVE THE RECOMMENDED MAXIMUM READINGS *STOP AND DO NOT PROCEED* WITH THE INSTALLATION. SEEK FURTHER ADVICE FROM INTERFACE BEFORE PROCEEDING.

4 Cleanliness

Before installation begins, foreign materials such as grease, oil, paint, existing floorcovering and any other harmful materials, should be removed. Any surface treatment or old adhesive that will effect the new adhesive or the holding power of the modular carpet should be treated or removed. The floor shall be vacuumed and washed to ensure a perfect bond.

5 Porosity

All concrete floors or floors that have been filled using a levelling compound should be sealed using a sealer compatible with the backing system.

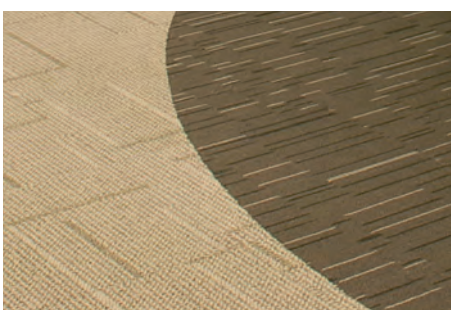
6 Alkalinity

The subfloor should have an alkalinity level of between pH7 & pH9 to be suitable for carpet installation. Test by wetting the floor with distilled water then using a pH test paper or meter.

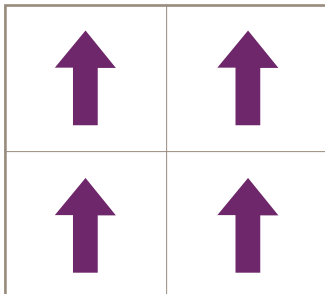
SHOULD THE PH LEVEL BE OUTSIDE THIS RANGE STOP AND DO NOT PROCEED WITH THE INSTALLATION. SEEK FURTHER ADVICE FROM INTERFACE BEFORE PROCEEDING.

02 MOISTURE AND PH TEST RESULT RECOMMENDATIONS

Moisture & PH Range Test Results	Interface Installation System
Less than 70% RH & less than pH9	TacTile or Intertac
Between 70% and 80% RH & less than pH 9	TacTile
Between 80% and 90% RH & less than pH 12	Seal substrate with GS420 NuSlab Seal and install with TacTile
Above 90% RH, or above pH12	Contact Interface for site specific advice

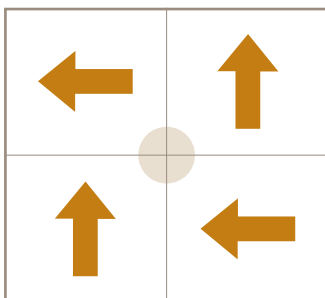


03 INTERFACEFLOR INSTALLATION METHODS AND CODES



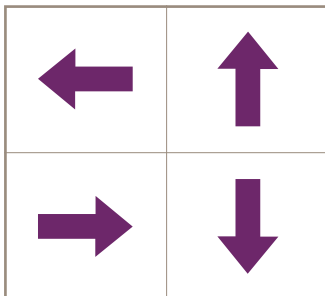
DIRECTIONAL Installation – Code DIR

An arrow is printed on the back of each modular tile to indicate pile direction. Make sure the arrows point in the same direction throughout your installation.



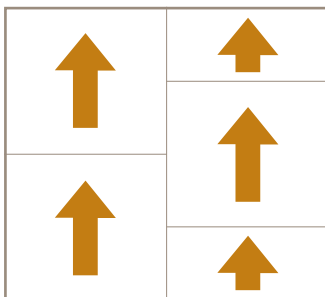
QUARTER TURN Installation – Code QTR

In this case, the arrows should be turned 90 degrees every other modular tile.



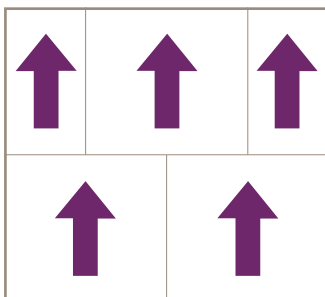
RANDOM Installation – Code RDM

This pattern allows installation of modular tiles without regard to arrow direction.



ASHLAR Installation

This pattern is created by offsetting the side joins of the modular tiles. All arrows should point in the same direction.



BRICK Installation

This pattern is created by offsetting the front and back joins of the modular tiles. All arrows should point in the same direction.

Code SPEC – Specification Methods can represent either: Directional, Quarter Turn, Ashlar or Brick Installation.

The codes printed on the cartons indicate the manufacturers' recommended installation method. However it is the installers' responsibility to confirm the clients' preferred installation method prior to commencement of installation.



CONTACTS



Australia

Interface Aust Pty Limited

Phone: 02 8332 2400

Fax: 02 9318 1996

Email: enquiries.ap@interfaceflor.com

Web: www.interfaceflor.com.au

For urgent installation, cleaning and maintenance

enquiries call 1800 785 277

New Zealand

InterfaceNZ Ltd

Phone: 0800 800 656

Email: enquiries@interfacenz.com

Web: www.interfacenz.com

® Interface, InterfaceFLOR, Intersept and GlasBac are registered trademarks of Interface Inc.

® InterTac is a registered trademark of Interface Aust Pty Limited.

® Airstep is a registered trademark of Bridgestone Australia Ltd.

™ i2 is a trademark of Interface Aust Pty Limited.